



## SecureLinX™ SLM Management Appliance

- ▶ Consolidate management of IT infrastructure
- ▶ Maintain a secure central point of access to all equipment
- ▶ Reduce troubleshooting and repair time
- ▶ Dynamically discover device on local or remote subnet
- ▶ Minimize total cost of ownership and administrative resources
- ▶ Maximize equipment up-time



## Simplify Management of IT Equipment and Your Entire Network Infrastructure

As the network infrastructure continues to grow to keep up with the demands of modern day business, the number of “out-of-band infrastructure” (OOBI) management devices increases. This equipment (console servers, KVMs and remote power managers) is used to manage data center devices such as servers, routers, switches, PBXs, UPSs, and even building access utilities through their serial ports. And now, ‘managing the management equipment’ is becoming a challenge.

The SecureLinX Management Appliance (SLM) is a ‘master control center’ that seamlessly integrates equipment connected by console servers, KVMs and remote power managers. Through a centralized point of access and common interface, it enables administrators to quickly and easily access equipment anywhere in the enterprise with just a few mouse clicks.

### Consolidated Access and Authentication

The SLM simplifies administration by offering multi-platform client access through a standard web browser for a single point of consolidated access with simplified views to OOBI management devices and attached equipment. This centralized authentication minimizes administrative burdens. And, since user account information is maintained in one place, there is no need to maintain separate user-names/passwords for each management device. Users can also be remotely authenticated using LDAP, RADIUS, NIS, Kerberos and TACACS+.

### Reduced Operating Costs

Streamlining overall operations reduces administration and maintenance costs. With consolidated remote access, network administrators can quickly isolate and access problem equipment. This can minimize the impact

of system down time, and improve employee and company productivity. Additionally, the SLM reduces total cost of ownership for data center equipment. Automated firmware deployment tools also reduce time and labor.

### Simplified and Bulletproof Security

The SLM helps IT departments adhere to corporate security policies. As a proxy between administrators and OOBI management devices, access is well defined and easily controlled, particularly where access is required outside a firewall or NAT-based router. Users are only allowed to access the devices and attached equipment with granted access specific rights for read-only or read/write access, and provisions for remote authentication. To ensure accountability, user access audit logs maintain a record of login success/failure, user login/logout, and port open/close activity. And whether connecting via a web browser or a command line (CLI), 128-bit encryption (SSL/SSH) ensures secure connections to the end-user equipment along with strong authentication.

### Advanced Feature Set

For quick and easy setup, Auto Discovery finds device and port assignment, eliminating the time-consuming task of manual configuration. Auto Discovery supports Lantronix Discovery Protocol (LDP) for SLC Console Servers and SNMP for all other devices. With the click of a button the SLC Update tool automates firmware deployment to console servers.

All console messages are captured and stored to the internal hard drive, providing secure and permanent storage. Console logs may be conveniently accessed through the web interface. System configurations can also be saved and restored, providing rapid recovery of inadvertent configuration changes and peace of mind.

Dual Ethernet adapters provide connection to OOBI management devices on the network, while remote users connect through another, providing greater security.





## Features and Specifications

### System Capacity

- Managed Devices: 256 max.
- Users: 25 simultaneous users

### Hardware

- Processor: Intel® Pentium® 4, 3.0 GHz
- RAM: 512MB
- Hard Disk: 160 GB
- Ethernet: Two (2) 10/100/1000Base-T (RJ45)
- Console: RS-232 (DB9)
- USB: Four (4); front (2), rear (2)

### Operating System

Linux

### Power Requirements

100-240VAC, 50 to 60 Hz, 250W

### Physical

- Dimensions (HxWxD): 1U, 4.3 x 42.4 x 35.6 cm (1.7 x 16.7 x 14 in.)
- Weight: 7.7 kg (17 lbs.)
- Shipping Weight: 10.5 kg (23 lbs.)

### Environmental

- Operating: 10°C to 35°C (50°F to 95°F)
- Storage: -40°C to 70°C (-40°F to 158°F)

### Certifications

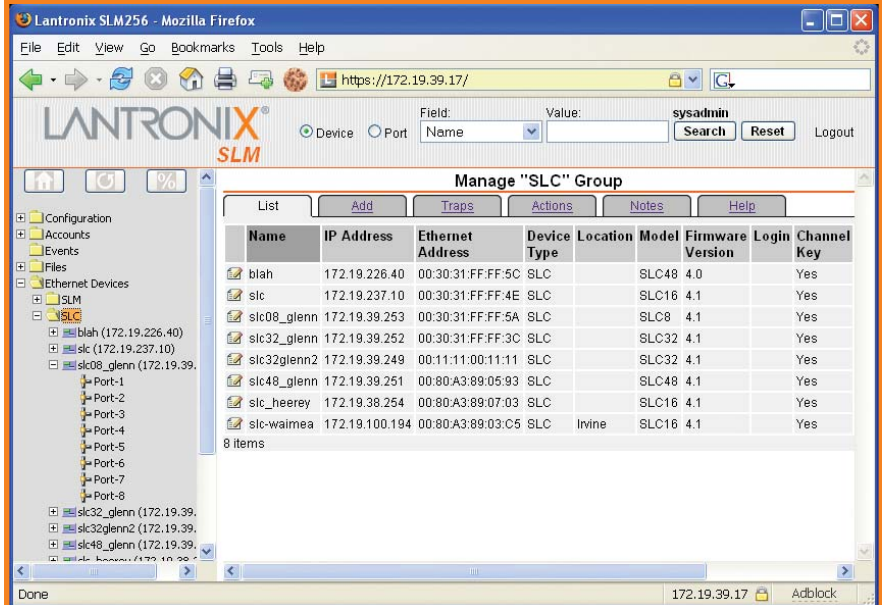
FCC, C/UL, TUV, CE

### Warranty

2-year limited warranty

\* RoHS-5 compliant - under the exception for Server and Network infrastructure equipment.

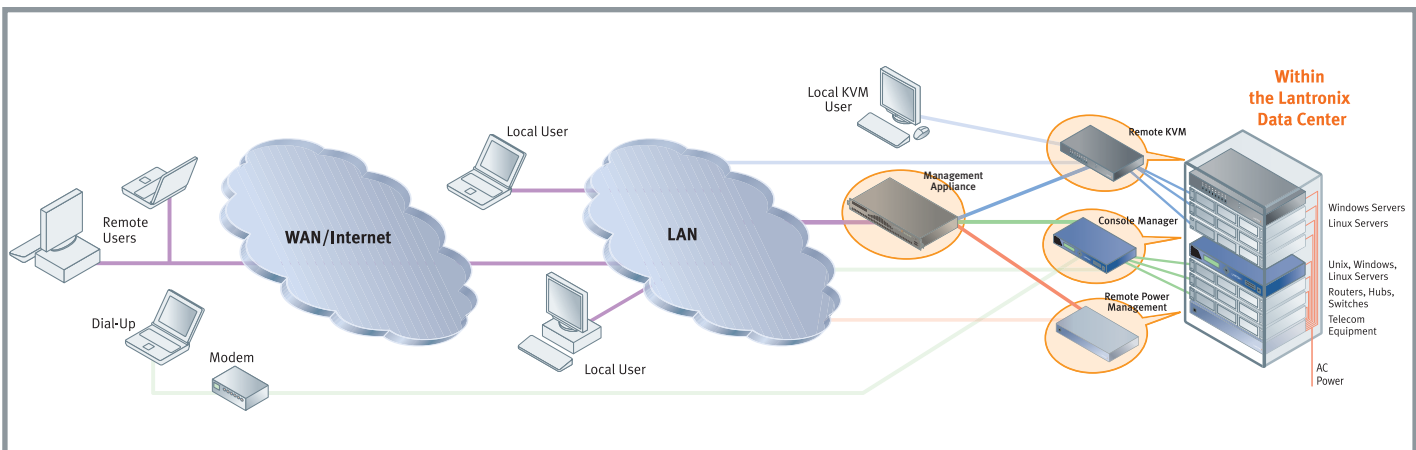
## Web Interface



- Interactive web interface requires no special software.
- Authenticate users only have access to authorized devices.
- Build in SSH Web Client provides secure access.
- Console messages logged for audit and control.

## Ordering Information

Part Number	Description
SLM25612N-02	SecureLinX Management Appliance



15353 Barranca Parkway | Irvine | CA 92618 | USA | Tel: 800.422.7055 | Fax: 949.450-7232 | [www.lantronix.com](http://www.lantronix.com)

©2006, Lantronix. Lantronix is a registered trademark, and SecureLinX and Remote KVM are trademarks of Lantronix, Inc. All other trademarks are the property of their respective owners. Specifications subject to change without notice. 910-476 12/06 DGS2500