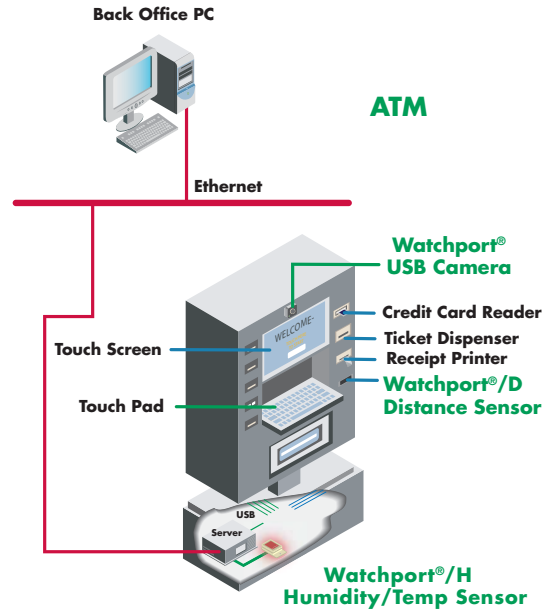
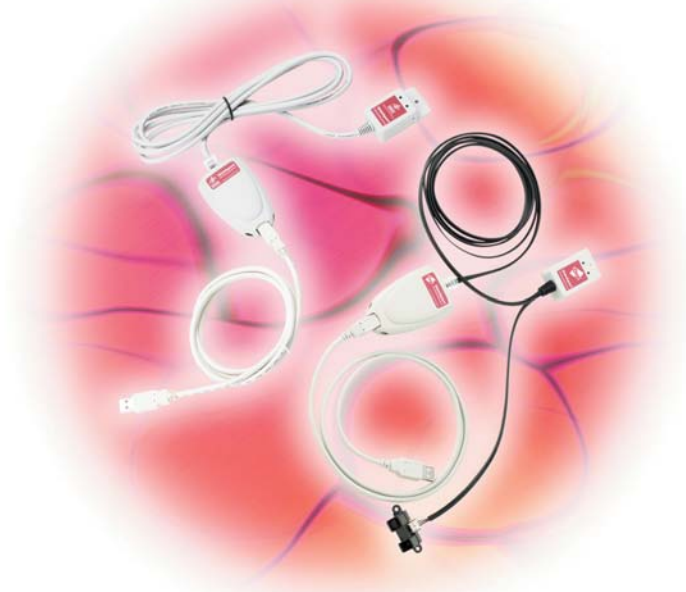


# Watchport® Sensors

USB Environment Monitoring Solutions

Create a made-to-order asset monitoring system with USB sensors.



## Features/Benefits

- Ideal for remote monitoring in POS (kiosks, ATMs), medical, data center and other security applications
- A la carte product selection allows total customization
- Easy to install and configure
- Free Watchport Manager software sends alerts for remote monitoring
- Extend distance between sensor and host with CAT5 UTP cable
- API available for application software development
- Microsoft® Windows® compatible

## Overview

The Watchport Series includes the first complete line of Plug and Play USB sensors for environment monitoring. Sensors are available to measure distance, proximity, humidity, temperature, acceleration, tilt and presence of water. Creating a made-to-order monitoring system with Watchport sensors can preempt damage to equipment and facilities and also reduce costly system downtime and maintenance in mission-critical environments such as kiosks, ATMs, server rooms, warehouses and data centers.

Watchport Manager software, included with each sensor, provides centralized device status, supports data logging to preserve historical information and enables the easy integration of multiple sensors without additional software development. For remote monitoring applications, Watchport Manager can provide alerts via email, pager and computer screen, or send an event trigger to an external application.

The application possibilities are almost endless. Monitor temperature and humidity levels in a server room; detect the presence of water in an ATM; activate an information kiosk monitor when a shopper is nearby; or protect confidential information by automatically ending a session at a human resources kiosk when the user is no longer detected. For added flexibility, multiple Watchport sensors may be configured and remotely monitored on an IP network with AnywhereUSB®.

# Watchport Sensors | Features Comparison

## FEATURES

- USB 1.0 and 1.1 compatible; backwards compatibility for 2.0
- Includes:
  - Base unit with USB cable to host PC
  - Sensing device with CAT5 cable to base unit
  - Windows driver software
  - Watchport Manager software
- ASCII command interface available for integration with application software
- Remotely monitor and configure multiple sensors on an IP network with AnywhereUSB/5

### Watchport Manager Software

- Centralized device status
- Historical data logging
- User-defined thresholds
- Cell phone, pager, email and onscreen alarms for remote monitoring
- Easy integration of multiple sensors without additional software development
- Minimizes into system tray to save screen space
- Free with Watchport sensors

### Watchport/H Humidity/Temperature Sensor

- Collects both relative humidity (RH) and temperature data
- Temperature compensated RH readings
- Configurable Watchport Manager alarm thresholds
- ASCII command interface
- Maximum reading rate: 20 per second
- Temperature accuracy:
  - +/- 3.6° F (+/- 2° C) at -40° F to 14° F (-40° C to -10° C) and +/- 0.9° F (+/- 0.5° C) at 14° F to 185° F (-10° C to 85° C)
- RH accuracy: +/- 5% at 0-90% non-condensing; +/- 8% over 90%
- RH stability: +/- 1% RH (typical) at 50% RH in 5 years
- Power consumption: 15 mA (normal), 1.0 mA (suspend mode)
- Maximum CAT5 UTP cable length: 500 ft (152.46 m)

## FEATURES (CONT.)

### Watchport/D Distance/Proximity Sensor

- Photo-electric sensor with hardware controlled sensitivity
- Enables system event triggering with Watchport Manager
  - Automatic log-off
  - Automatic system lock
  - Run user-selectable files such as screen savers, batch files, scripts and executables
- Detection range 1.6 to 4.9 ft (0.5 to 1.5 m)
- Maximum reading rate: 3 per second
- Maximum switching frequency: 100 Hz
- Response delay: ≤5.0 ms (typical)
- Power consumption: 70 mA (max)
- Maximum CAT5 UTP cable length: 500 ft (152.46 m)

### Watchport/T Temperature Sensor

- Configurable Watchport Manager alarm thresholds
- ASCII command interface
- Maximum reading rate: 20 per second
- Temperature accuracy: +/- 3.6° F (+/- 2° C) at -40° F to 14° F (-40° C to -10° C) and +/- 0.9° F (+/- 0.5° C) at 14° F to 185° F (-10° C to 85° C)
- Temperature resolution: 0.1° C
- Power consumption: 15 mA (normal), 1.0 mA (suspend mode)
- Maximum CAT5 UTP cable length: 500 ft (152.46 m)

### Watchport/W Water Detector

- 2 gold plated pins detect wetness on a non-conductive surface
- Binary output with "Wet" or "Dry" readings
- Waterproof enclosure
- Maximum reading rate: 5 per second
- Power consumption: 15 mA (normal), 1.0 mA (suspend mode)
- Maximum CAT5 UTP cable length: 1,000 ft (304.8 m)

### Watchport/A Accelerometer

- Dual axis accelerometer
- Measures dynamic acceleration such as vibration or static acceleration (gravity)
- Measures tilt to 0.1°
- Acceleration from -2g to 2g

## OPERATING SYSTEMS

- Windows XP, Windows XP Embedded
- Windows NT® 4.0, Windows NT Embedded
- Windows CE
- Windows 2000/Me
- Windows 98/SE
- Windows 95
- Windows Server™ 2003

## REGULATORY APPROVALS

- FCC Part 15, Class B
- CE
- EN55022
- EN55024
- EN60950
- UL 1950
- CSA 2.2 No. 950
- IEC-950

## ENVIRONMENTAL

### USB Base

- Operating temperature: 32° F to 149° F (0° C to 65° C)
- Relative humidity: 0% to 95% (non-condensing)

### Sensing Device

- Operating temperature: -40° F to 185° F (-40° C to 85° C)
- Relative humidity: 0% to 95% (non-condensing)

## POWER REQUIREMENTS

- USB-powered (no external power supply required)

## DIMENSIONS

### USB Base

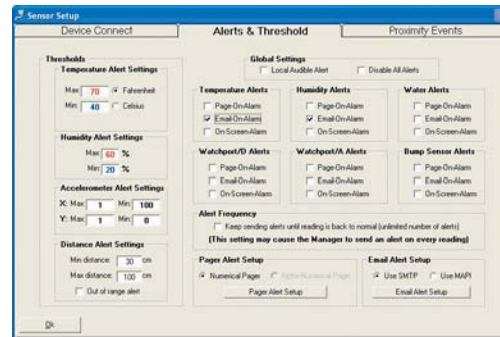
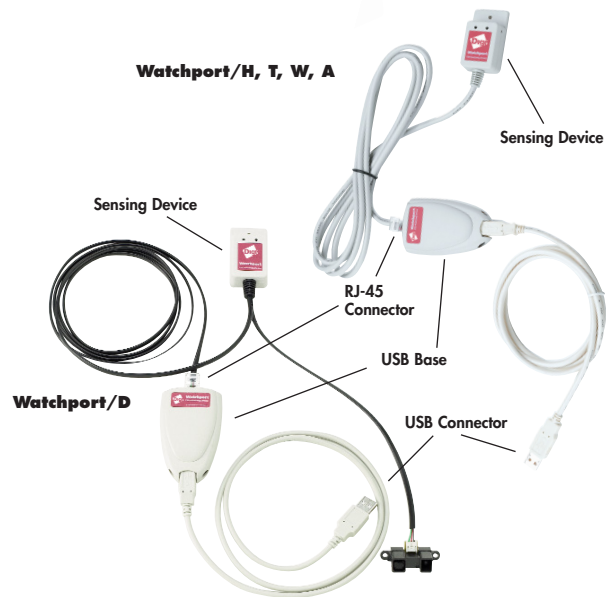
- Length: 3.15 in (8.00 cm)
- Width: 1.75 in (4.45 cm)
- Height: 0.80 in (2.03 cm)
- Weight: 3.00 oz (85.05 g)

### Sensing Device (Watchport/H, T, W, A)

- Length: 2.12 in (5.39 cm)
- Width: 1.19 in (3.02 cm)
- Height: 0.69 in (1.75 cm)
- Weight: 3.00 oz (85.05 g)

### Sensing Device (Watchport/D)

- Length: 1.75 in (4.45 cm)
- Width: 0.74 in (1.88 cm)
- Height: 0.85 in (2.16 cm)
- Weight: 3.00 oz (85.05 g)



Alerts and thresholds

## MODEL.....PART NUMBERS

| Model                                     | North America | International |
|---|---------------|---------------|
| Watchport/H (Humidity/Temperature Sensor) | 301-1141-01   | 301-1141-01   |
| Watchport/D (Distance/Proximity Sensor)   | 301-1146-01   | 301-1146-01   |
| Watchport/T (Temperature Sensor)          | 301-1144-01   | 301-1144-01   |
| Watchport/W (Water Detector)              | 301-1145-01   | 301-1145-01   |
| Watchport/A (Accelerometer)               | 301-1147-01   | 301-1147-01   |

Additional Watchport Sensors in development. Contact us for details.

Watchport USB cameras, motion detection software and facial recognition software also available. See website for details.

**DIGI SERVICE AND SUPPORT** - You can purchase with confidence knowing that Digi is here to support you with expert technical support and a strong five-year warranty. [www.digi.com/support](http://www.digi.com/support)

### Digi International

11001 Bren Road E.  
Minnetonka, MN 55343  
U.S.A.  
PH: 877-912-3444  
952-912-3444  
FX: 952-912-4952  
email: [info@digi.com](mailto:info@digi.com)

### Digi International France

31 rue des Poissonniers  
92200 Neuilly sur Seine  
PH: +33-1-55-61-98-98  
FX: +33-1-55-61-98-99  
[www.digi.fr](http://www.digi.fr)

### Digi International KK

NES Building South 8F  
22-14 Sakuragaoka-cho,  
Shibuya-ku  
Tokyo 150-0031, Japan  
PH: +81-3-5428-0261  
FX: +81-3-5428-0262  
[www.digi-intl.co.jp](http://www.digi-intl.co.jp)

### Digi International (HK) Limited

Suite 1703-05, 17/F.,  
K Wah Centre  
191 Java Road  
North Point, Hong Kong  
PH: +852-2833-1008  
FX: +852-2572-9989  
[www.digi.cn](http://www.digi.cn)

Digi International, the leader in device networking for business, develops reliable products and technologies to connect and securely manage local or remote electronic devices over the network or via the web. With over 20 million ports shipped worldwide since 1985, Digi offers the highest levels of performance, flexibility and quality.

[www.digi.com](http://www.digi.com)

© 1999-2007 Digi International Inc.

All rights reserved. Digi, Digi International, the Digi logo, the When Reliability Matters logo, AnywhereUSB, Watchport and Edgeport are either trademarks or registered trademarks of Digi International Inc. in the United States and other countries worldwide. All other trademarks are the property of their respective holders.

WHEN  
**RELIABILITY**  
MATTERS™

91001222  
E1/807

