

Remote Power Control



Remote Power Models

Each unit has individually (relay) controlled AC power receptacles, enabling users to monitor current, voltage, power and temperature.

PCR8

- 8 Port
- 1U rack mount

PCS12

- 12-Port
- "zero-U" vertical mount

PCS20

- 20-Port
- "zero-U" vertical mount

Remote Power Management Solutions for Ultimate Control.

Control power to data center devices anytime, anywhere.

Raritan's new remote power control units provide system administrators with the capability to securely monitor and control power to data center devices from any location via Web browser, serial connection or out-of-band access.

In the event of system failure and/or system lockup, rebooting is often the only option. For true "lights out" data center management, the ability to recover data center devices remotely is vital. Raritan's Remote Power Control (RPC) units eliminate the need to perform manual intervention or dispatch field personnel vastly reducing downtime and Mean Time To Repair (MTTR), as well as ultimately increasing productivity.

Integrated solutions for total data center management.

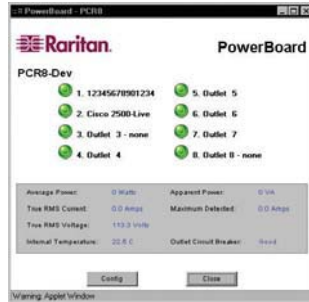
Raritan RPC offers total integration with Raritan's Paragon®, IP-Reach™ and Dominion™ data center management solutions, enabling remote monitoring, reboot and shutdown of all equipment without requiring expensive add-on equipment, navigation of multiple, disparate menus or maintaining different levels of passwords and IDs. Access and control to the RPC units is accomplished through any of the following:

- Directly via the Paragon User Interface and Paragon Manager™.
- Via a serial connection with an AUATC Serial Terminal Converter or SCS232 ConsoleSwitch™.
- Via a Raritan PowerBoard applet with Dominion.
- Via a Raritan Remote Client with IP-Reach.

Raritan's RPC units are available in 8-port (PCR8), 12 port (PCS12) and 20 port (PCS20) form factors. Some of the units provide the means to turn On/Off or reboot equipment connected through the RPC unit. In addition, the RPC allows you to monitor current, voltage, power and temperature.

Access and control is executed via Cat5 cable connection to an EIA-232 port. This port can be connected to any terminal server and/or external modem for dial-up access. In addition, RPC units are designed to provide integrated operation with Raritan's Paragon, IP-Reach and Dominion data center management solutions. Each remote power control unit supports commands for receptacle control, status and configuration. Commands include: on, off, reboot, config and status.

The RPC units provide a response to indicate that commands have been acknowledged and completed. With true RMS current measurement and reporting, the RPC units will report how much current (in amps) the attached equipment is drawing. An audible overload alarm will sound when a preset threshold is reached.



Use the PowerBoard applet for integrated power control with Raritan's Dominion Family

Features

- Total integration with Raritan's Paragon, IP-Reach and Dominion solutions.
- True RMS current monitoring with overload alarm buzzer and indicator LED.
- Receptacle status retention during power loss.
- Individual or collective control of receptacles.
- Programmable unit ID and receptacle names.
- Voltage and temperature monitoring.
- 1U or "zero-U" form factor available.
- 15 or 20 Amp Power Rating.
- Available in multiple plug and receptacle form factors.
- Audible overload alarm.

Specs

PCR8, PCS12, PCS20	
Number of Serial ports	PCR8: 8 ports PCS12: 12 ports PCS20: 20 ports
Connection to Target Device	RJ45 Cat5e cable to EIA-232 serial port adapter
Network Connectivity	RJ45 CAT5e cable (10/100baseT) connection form factor
Form Factor	
PCR8	
Dimensions	16.73" (W) x 5.25" (D) x 1.72" (H)
Power Requirements	115VAC, 15 Amp
Operating Temperature	0° to 40° C
Regulatory Approvals	FCC Part 15 A, CE, ETL listed to CSA C22.2 60950, UL 60950
PCR12	
Dimensions	1.75" (W) x 1.75" (D) x 56" (H)
Power Requirements	115VAC, 20 Amp
Operating Temperature	0° to 40° C
Regulatory Approvals	FCC Part 15 A, CE, ETL listed to CSA C22.2 60950, UL 60950
PCR20	
Dimensions	1.75" (W) x 1.75" (D) x 65.76" (H)
Power Requirements	115VAC, 20 Amp
Operating Temperature	0° to 40° C
Regulatory Approvals	FCC Part 15 A, CE, ETL listed to CSA C22.2 60950, UL 60950

*Standard Warranty Two Years with Advanced Replacement

When you're ready to take control, do it with Raritan's Remote Power Control.



Headquarter Germany:
SPHINX Computer Vertriebs GmbH
Phone: +49 (0) 6201 75437
www.sphinxcomputer.de
mail@sphinxcomputer.de

Subsidiary France:
SPHINX Connect France
Phone: +33 (0) 2 51 09 26 60
www.sphinxconnect.com
mail@sphinxconnect.com

Subsidiary Germany:
SPHINX Connect GmbH
Phone: +49 (0) 711 7287 5750
www.sphinxconnect.de
mail@sphinxconnect.de

Branch Office Belgium
Phone: +32 26 39 39 48
www.sphinxconnect.com
benelux@sphinxconnect.com

Subsidiary Austria:
S-Connect Vertriebs GmbH
Phone: +43 (1) 504 84 78 0
www.s-connect.at
mail@s-connect.at

Branch Office Spain
Phone: +34 913 109 823
www.s-connect-espana.com
mail@s-connect-espana.com

Subsidiary Great Britain:
S-Connect Ltd.
Phone: +44 (0) 1276 203 10
www.s-connect.ltd.uk
mail@s-connect.ltd.uk

Sales Partner Switzerland:
VISONET AG
Phone: +41 41 768 05 80
www.visonet.ch
info@visonet.ch