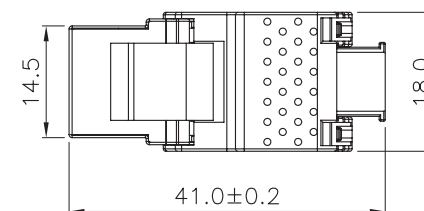
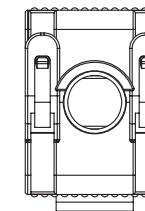
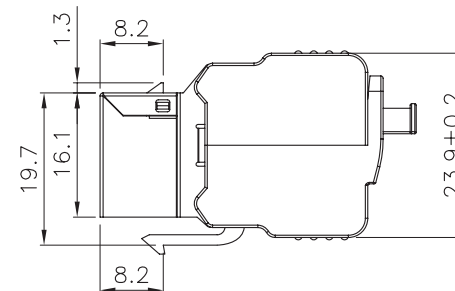
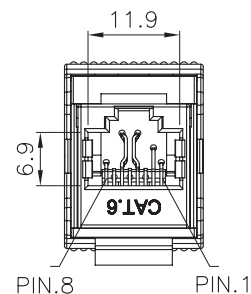


SCALE 1/1



Specification :

Material :

1. Shield : Bronze with Nickel plated.
2. Plastic Housing : ABS + PC, UL 94V-2.
3. Jack Bracket Set : Polycarbonate, UL 94-HB, Transparent color.
4. RJ45 Jack Contact material & finished :
 - 4-1. Phosphor Bronze with 30-40 micro-inch Nickel plated.
 - 4-2. Contact area : Min.3mm 50 micro-inch Gold plated.
5. IDC Housing : PC+5%GF, UL 94-HB.
6. IDC Terminal material & finished :
 - 6-1. Phosphor Bronze with 50 micro-inch Tin plated.
 - 6-2. Use for 22-26 AWG stranded and solid wire.
7. IDC CAP A&B : Zinc Die-Casting with nickel plated.
8. IDC CAP : PC+5%GF, UL 94-HB.

Performance :

- a. The IDC CAP color codes combine two wirings of T568A & T568B.
- b. Insertion Force : 900 gms for 8 contacts.
- c. Retention Strength : 7.7 kgs between Jack and Plug.
- d. Operation Temperature : -40°C to 80°C.
- e. Durability :
 - e-1. Jack : 750 cycles Plug-Jack mating and unmating test, insertion cycles at 20 cycles/minute max. Contact resistance test per 100 cycles.
 - e-2. IDC : Max. 200 punching times.
- f. The Cat.6 performance is in compliance with the ANSI/TIA/EIA 568 B.2-1 standard.

GENERAL TOLERANCE OF DIMENSIONS

X.XXX	±0.005
X.XX	±0.05
X.X	±0.1



**Keystone Jack Cat.6, full shielded,
tool free connector**