



The LanStream 2000 is a serial server with built in hub providing a multifunction solution for combined serial and LAN networking applications. Cutting the cost of ownership and the need for multiple units, LanStream 2000 can act as a Serial Server, Remote Access Server, and LAN Hub.

Ease of Use

The LanStream is extremely easy to configure directly or via IP using command line, character based menus or a web browser.

Pseudo or Fixed Connections

The LanStream is capable of pseudo connections to servers via Telnet or Rlogin without additional software. However, where a server's application needs to access fixed TTY or COM ports, Perle provides software called Trueport free with every unit. When using the application the LanStream ports appear as standard fixed serial ports.

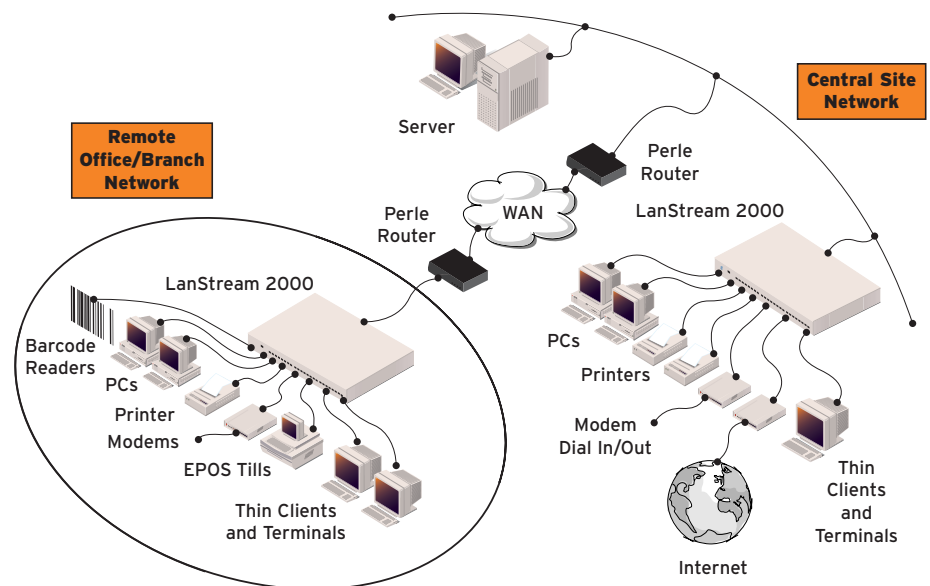
Integrated Multifunction Serial Server and Hub

Features & Benefits

- High performance serial server
- Integrated 10BaseT Hub ports
- Flexible Remote Access Server
- Extremely easy to configure
- Comprehensive security features
- Free Fixed port software (Trueport)
- Free Flash firmware upgrades
- Comprehensive management options
- Rack and desk mount options
- Lifetime warranty for security and peace of mind

Applications

- Connect EPOS devices over the LAN
- Access serial devices for manufacturing process control
- Provide remote access to users and customers
- Connect PC's and Workstations to office LAN
- Provide Terminal/printer access within harsh environments
- Connect modem pools for dial-in/dial-out purposes
- Providing connectivity in remote branches



Multiple Applications

The LanStream is an extremely flexible solution capable of supporting a number of different applications including:

- RAS – LanStream can perform as a remote access server using SLIP and PPP with security provided by PAP, CHAP, callback and Radius support
- Printing – LanStream can act as a print server using RCP, LPD or Trueport software
- POS and Data Acquisition – connect to various devices such as barcodes, scanners, weigh scales, tills, etc using Perle's Trueport software
- Traditional Terminal Server – LanStream has all the features you would expect from a brand leader
- Hub – with 8 or 16 hub ports, office PC's can also be connected

Class Leading Support and Warranty

The Perle LanStream is backed by the best service and support in the industry including Perle's unique lifetime warranty.

Technical Specifications

Connectivity

Serial Ports

- 8 or 16 shielded RJ45 ports

Hub Ports

- 8 or 16 10BaseT Ethernet ports with shielded RJ45 connectors

BackBone LAN Attachment

- 10BaseT with uplink/hub (MDI/MDI-X) switch

Management Port

- 8-16H model has RS232 DB9 female
- 16-8H model has RS232 DB25 female

Physical

Architecture

- 32 bit processor
- Custom ASICs
- Up to 230 Kbps throughput per port

Serial Port Signals/Protection

- TXD, RXD, RTS, CTS, DTR, DSR, DCD and GND
- All serial ports are ESD protected to 15KV through air

LED Indicators

- Main – Power and Network;
- Serial – Send and Receive integrated into each RJ45 connector
- Hub – Link/Traffic and Partition

Power, Dimensions and Weight

- Internal, auto-ranging, 110-240V
- (h) 45mm (l) 230mm (w) 430mm (without ears)
- 2.0 kg

Environmental

- Operating Temperature: 0° to 40°C
- Storage Temperature: -30° to 70°C
- Operating Humidity: 5 to 95% RH (non-condensing)
- Storage Humidity: 5 to 95% RH (non-condensing)

Approvals

- EN55022 Class A, FCC A, CSA/NRTLc, IEC950, EN60950, CE, CTick

Software

Administration

Local or Remote management using:

- Command Line
- Menu Command Interfaces
- JETset™ Web-based configuration utility
- JETstart™ Web-based getting started utility
- Multi-Language Support. English, French, German, Italian, Spanish, Mandarin Chinese, and ability to load a custom language file

Remote Access

- Support for up to 20 different modem types initialisation strings

Security

- RADIUS authentication (RFC2058)
- RADIUS accounting (RFC2059)
- PAP
- CHAP
- Fixed and Roaming Callback

Upgrades

FLASH update via:

- Network using BOOTP, DHCP or TFTP
- Local management port using Jetload™

Network Protocols

- TCP/IP
- UDP
- ICMP
- SNMP
- ARP, Proxy ARP, RARP
- DHCP, BOOTP
- RIP and Static Routing
- PPP, SLIP, CSLIP
- TELNET, RLOGIN
- CLEAR TCP
- HTTP
- WINS
- DNS

TruePort

Fixed TTY/COM port emulation software for:

- AIX
- SCO UnixWare
- SCO OpenServer
- HP UX

- SUN Solaris
- UNIX SVR4
- Microsoft Windows® 2000
- Microsoft Windows® NT
- Linux

Warranty

- Limited lifetime warranty

Technical Support

End User

- Free 60 day access to Perle's hotline technical support for all registered new products.
www.perle.com/support/warranty_reg.html

Value Added Resellers / Distribution Partners

- Free access to Perle's hotline technical support for all registered partners.
www.perle.com/partners/index.html

Maintenance Agreement

- To ensure rapid system recovery, maintenance agreements are available for Perle hardware. These include on-site service or express part replacement in many areas, and free access to hotline technical support.
www.perle.com/support/service_sales.html

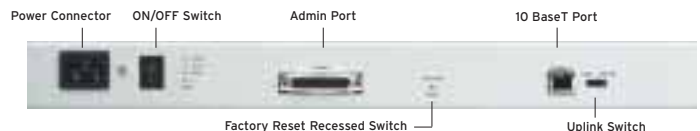
Free Software

- Perle provides free software upgrades to registered users via Perle's Web site.
www.perle.com/downloads

Visit the Perle Web site for up-to-date support and availability information.
www.perle.com/products

Ordering Information

For Product Codes and Model Descriptions, please visit Perle's Web site at www.perle.com/products and select Product Family Serial Servers



Headquarter Germany:
SPHINX Computer Vertriebs GmbH
Phone: +49 (0) 6201 75437
www.sphinxcomputer.de
mail@sphinxcomputer.de

Subsidiary France:
SPHINX Connect France
Phone: +33 (0) 2 51 09 26 60
www.sphinxconnect.com
mail@sphinxconnect.com

Subsidiary Germany:
SPHINX Connect GmbH
Phone: +49 (0) 711 7287 5750
www.sphinxconnect.de
mail@sphinxconnect.de

Branch Office Belgium
Phone: +32 26 39 39 48
www.sphinxconnect.com
belnux@sphinxconnect.com

Subsidiary Austria:
S-Connect Vertriebs GmbH
Phone: +43 (1) 504 84 78 0
www.s-connect.at
mail@s-connect.at

Branch Office Spain
Phone: +34 913 109 823
www.s-connect-espana.com
mail@s-connect-espana.com

Subsidiary Great Britain:
S-Connect Ltd.
Phone: +44 (0) 1276 203 10
www.s-connect.ltd.uk
mail@s-connect.ltd.uk

Sales Partner Switzerland:
VISONET AG
Phone: +41 41 768 05 80
www.visonet.ch
info@visonet.ch