



The Perle 833 is a dial-up remote access server for connecting telecommuters and mobile users to a corporate LAN. Remote PCs act like a local node on the LAN and can access all network resources as if they were locally connected. Backed by a lifetime warranty, the Perle 833 is a full function, secure remote access solution which is ideal for small companies and branch offices.

### Complete Remote Access Solution

#### Features and Benefits:

- 2, 4, or 8 high speed dial-in port models to meet all your networking needs
- Supports all major desktop operating systems for greater network flexibility
- Supports all major LAN operating systems to access all network resources
- Multi-level security features including Windows Internet Authentication Service (IAS) safeguards your network
- Local or remote management functions can be conveniently managed from anywhere on the network
- Full function dial-out modem pooling enables LAN-based users to send faxes\* or dial-out to the Internet or other on-line services
- Convenient front panel display and keypad for easy configuration
- Multi-language support to meet your needs, regardless of your language or location
- Lifetime warranty for security and peace of mind

#### Applications

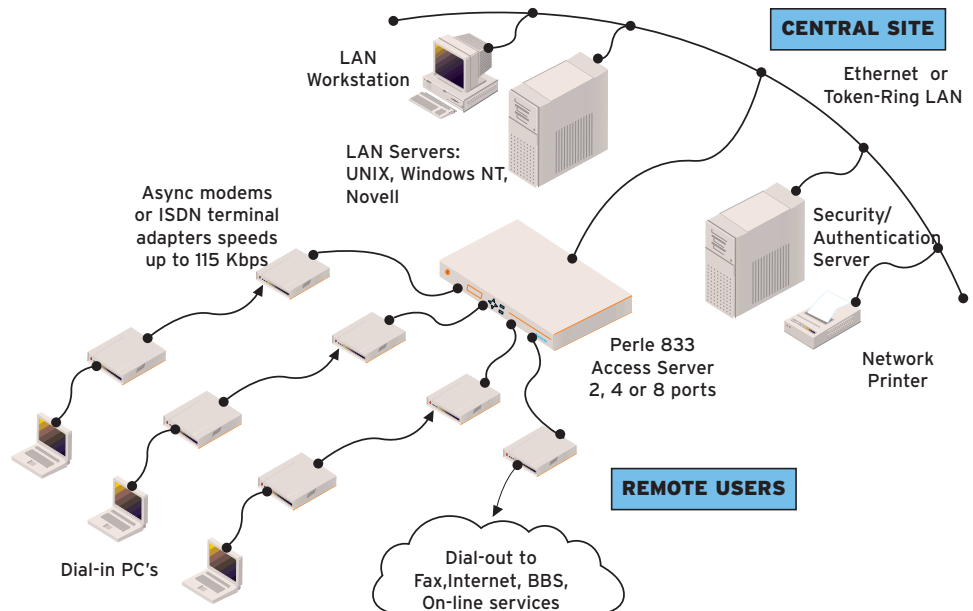
- Central site modem dial-in remote access
- Departmental/workgroup dial-in remote access
- Dial-out modem pooling

### Complete RAS Solution

The Perle 833 Remote Access Server is a reliable and complete remote access server solution, consisting of a dial-in server with management, dial-out software and client software (unlimited licences). The native dial-up networking facility is fully supported for Windows XP, NT, 2000, 98 and 95.

### Secure Access

Security is a key issue when supporting remote users. To meet those needs, the Perle 833 has multi-level security and management features and supports major security standards including PAP, CHAP, RADIUS, NetWare Bindery, PassGo Defender, SecurID-ACE/Server, Windows NT Domain Authentication and Windows Internet Authentication Service (IAS).



### Dial-out/Fax-out

The Perle 833's unique dial out capabilities allow LAN-based users to easily and efficiently send faxes\* or dial-out to the Internet or other on-line services. Perle 833 servers can also be grouped into a single dial-out pool, simplifying the set-up and installation for dial-out users.

### Local, Remote Management

With its Windows-based manager software, the Perle 833 can be readily installed and managed from a PC attached either to the LAN, or remotely via high speed modems. It even has a front panel display and keypad so that some configuration can be performed conveniently at the server, if required.

### Class Leading Service and Support

The Perle 833 is backed by the best service and support in the industry including Perle's unique lifetime warranty.

## Technical Specifications

### Connectivity

#### LAN Interface

##### Ethernet

- 10 BaseT (RJ-45)
- 10 Base5 (AUI)

##### Token-Ring

- UTP, Type 3 (RJ-45)
- STP, Type 1 (DB-9)

#### WAN Interface

- 2, 4 or 8 ports
- Asynchronous EIA/TIA-232-E Serial Ports (up to 115 Kbps per port)
- Male DB9 EIA/TIA 574 connectors
- Compatible with external modems and ISDN terminal adapters

### Physical

#### Architecture

- 32-bit RISC Processor
- AMD 29200 (2 and 4 ports)
- AMD 29240 (8 ports)
- 1 MB Flash ROM
- 2 MB RAM

#### Front and Rear Panel Indicators

- Power LED
- System operational LED
- LAN connect LED
- 2 x 16 LCD panel

#### Power, Dimensions and Weight

- Operating Voltage: 100–240 VAC (auto-sensing), 50–60Hz
- 40 watts
- 50 x 432 x 250 mm (HxWxD)
- 3.1 kg

#### Environmental

- Operating Temperature: 0°–40°C
- BTU Output: 400 BTU/hour max.

#### Approvals

- FCC Class A, TUV, UL, CSA, DOC, CE

### Networking

#### Administration

- Manager works from remote or local PCs
- Management Software: Windows XP, 2000, NT, Me, 98, 95

- IP Address Management through DHCP Server, IP Address pool, dial-in client, user record, or port record

#### Network Protocols

- ARAP 1 or ARAP 2 protocol
- PPP
- IPX
- TCP/IP
- NetBEUI
- LLC (802.2)
- DHCP, BOOTP
- SNMP

#### Security

- Windows Internet Authentication Service (IAS)
- PAP, CHAP
- Call-back: Windows XP, 2000, NT, Me, 98, 95
- Firewall: TCP/IP or IPX packet filtering, protocol enable/disable
- RADIUS
- Internal User Lists
- Share internal user lists between Perle 833s
- NetWare Bindery Support
- PassGo Defender (Axent DSS)
- SecurID-ACE/Server
- Password aging function

#### Language Support

- English, French, Italian, German, Spanish and Japanese

#### Dial-out Client

The Perle 833 dial-out client supports the following desktop operating systems

- Windows 9x, NT, 2000, XP
- Linux

### Warranty

- Limited lifetime warranty

### Technical Support

#### End User

- Free 60 day access to Perle's hotline technical support for all registered new products.  
[www.perle.com/support/warranty\\_reg.html](http://www.perle.com/support/warranty_reg.html)

#### Value Added Resellers / Distribution Partners

- Free access to Perle's hotline technical support for all registered partners.  
[www.perle.com/partners/index.html](http://www.perle.com/partners/index.html)

#### Maintenance Agreement

- To ensure rapid system recovery, maintenance agreements are available for Perle hardware. These include on-site service or express part replacement in many areas, and free access to hotline technical support.  
[www.perle.com/support/service\\_sales.html](http://www.perle.com/support/service_sales.html)

#### Free Software

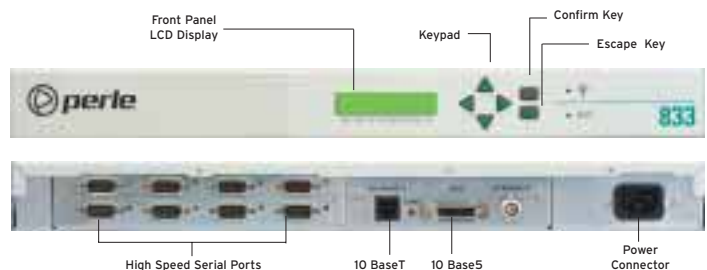
- Perle provides free software upgrades to registered users via Perle's Web site.  
[www.perle.com/downloads](http://www.perle.com/downloads)

Visit the Perle Web site for up-to-date product support and technical information.  
[www.perle.com/products](http://www.perle.com/products)

\* in conjunction with third party fax software packages

### Ordering Information

For Product Codes and Model Descriptions, please visit Perle's Web site at [www.perle.com/products](http://www.perle.com/products) and select Product Family Access Servers



Essential Network Connectivity



**Headquarter Germany:**  
SPHINX Computer Vertriebs GmbH  
Phone: +49 (0) 6201 75437  
[www.sphinxcomputer.de](http://www.sphinxcomputer.de)  
[mail@sphinxcomputer.de](mailto:mail@sphinxcomputer.de)

**Subsidiary France:**  
SPHINX Connect France  
Phone: +33 (0) 2 51 09 26 60  
[www.sphinxconnect.com](http://www.sphinxconnect.com)  
[mail@sphinxconnect.com](mailto:mail@sphinxconnect.com)

**Subsidiary Germany:**  
SPHINX Connect GmbH  
Phone: +49 (0) 711 7287 5750  
[www.sphinxconnect.de](http://www.sphinxconnect.de)  
[mail@sphinxconnect.de](mailto:mail@sphinxconnect.de)

**Branch Office Belgium**  
Phone: +32 26 39 39 48  
[www.sphinxconnect.com](http://www.sphinxconnect.com)  
[belnux@sphinxconnect.com](mailto:belnux@sphinxconnect.com)

**Subsidiary Austria:**  
S-Connect Vertriebs GmbH  
Phone: +43 (1) 504 84 78 0  
[www.s-connect.at](http://www.s-connect.at)  
[mail@s-connect.at](mailto:mail@s-connect.at)

**Branch Office Spain**  
Phone: +34 913 109 823  
[www.s-connect-espana.com](http://www.s-connect-espana.com)  
[mail@s-connect-espana.com](mailto:mail@s-connect-espana.com)

**Subsidiary Great Britain:**  
S-Connect Ltd.  
Phone: +44 (0) 1276 203 10  
[www.s-connect.ltd.uk](http://www.s-connect.ltd.uk)  
[mail@s-connect.ltd.uk](mailto:mail@s-connect.ltd.uk)

**Sales Partner Switzerland:**  
VISONET AG  
Phone: +41 41 768 05 80  
[www.visonet.ch](http://www.visonet.ch)  
[info@visonet.ch](mailto:info@visonet.ch)