

P800 SERIES

Perle Fixed Configuration Access Routers



Small footprint routers for Small Offices and Telecommuters

Features and Benefits:

- Virtual Private Network (VPN) capabilities for secure, low cost networking
- Point-to-Point Protocol over Ethernet for access to DSL or cable modem broadband networks
- Multiple variants to suit specific user requirements
- Integrated security to protect LANs from unauthorised network access
- P850 uses auto-configuration to detect Frame Relay parameters for trouble-free connectivity
- Compatibility with other vendors' products via industry standard protocols
- Stac LZS data compression increases data throughput up to 600%
- POTS version saves phone line rental
- Lifetime warranty for security and peace of mind

Applications

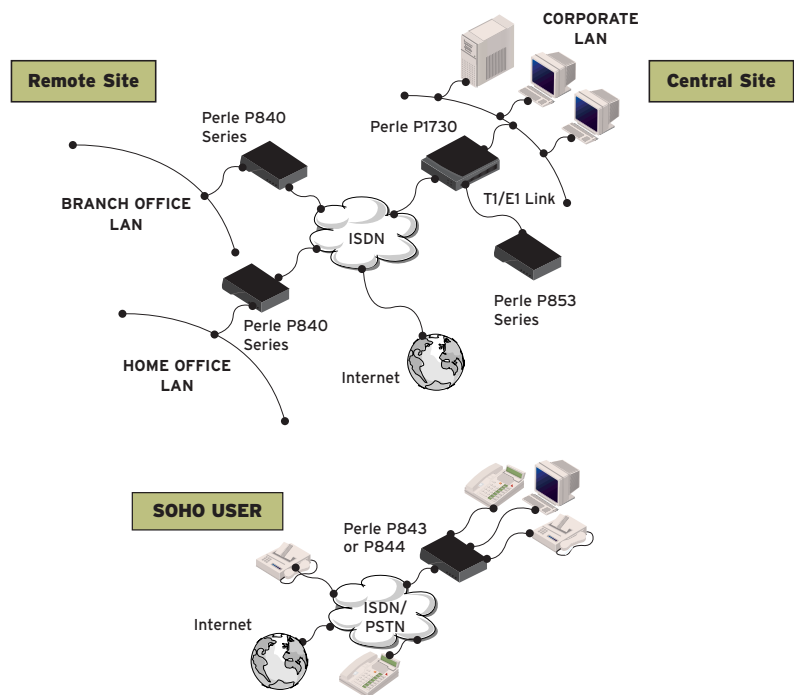
- Remote office access to control office
- Home office access to ISP and central office
- Small office with single ISDN link
- Internet Access

The Perle P800 Series of access routers offers the best network reliability and security for today's small offices and telecommuters along with an unrivaled cost of ownership.

Connectivity Options

The Perle P841 to P844 routers provide ISDN connectivity for small offices around the world. High data throughput and line management is maintained through data compression and bandwidth protocols to ensure the optimal and economic utilisation of BRI connections.

The Perle P841 to P844 routers include a low-cost entry-level model where up to 10 LAN users can access the Internet. These routers can be expanded with a software upgrade as the office needs grow.



The Perle P851 to P853 support synchronous serial connections for Frame Relay and Point-to-Point Protocol (PPP). At all speeds, the P850 routers optimise data transfer by monitoring for Frame Relay congestion. If necessary, the routers will scale back transmission to improve actual data throughput.

Security

Perle routers ensure data privacy with secure user authentication, firewalls, monitoring, configurable PPP security levels and other features. Optional VPN software ensures secured data gets to its intended audience and to no-one else.

Management

The Perle P800 Series routers support administrator management from a range of platforms and applications. By utilising the Perle router configuration tools, such as the easy-to-use menuing system and the automatic self configuration of the Frame Relay and leased line interfaces, administrators can very quickly set up the routers at local and remote sites for immediate productivity.

Class Leading Service and Support

The Perle P800 Series are backed by the best service and support in the industry including Perle's unique lifetime warranty.

Technical Specification

Routing Protocols

- IP
- IPX (except P84x-10 products)
- RIP, RIP2
- SAP - (Convert SAP learned services to static)
- SAP - Spoofing
- Static ARP, Proxy ARP
- ICMP

Bridging Protocols

- 802.3/Ethernet – Transparent MAC layer bridging
- 802.1D – Spanning Tree Protocol

WAN Protocols

- PPP (PPP-ML)
- Frame Relay RFC 1490 (P850 Series)
- Frame Relay PPP encapsulation (P850 Series)
- PPPoE RFC 2516

Other Protocols

- UDP, TCP, TFTP
- Bootstrap Protocol Relay Agent (BootP Relay, DHCP Relay)
- DHCP
- BCP, CCP, BACP (P840 Series)

Frame Relay (P850 Series)

- Support for up to 20 DLCIs
- LMI Support for Annex A (ANSI), Annex D (ITU), LMI Type, and None
- Default learning of LMI type
- Auto Learning of Frame Relay DLCIs

Security

- NAT, NAPT, Reverse NAPT
- NetSAFE Firewall, PAP, CHAP
- VPN (optional): IPSec, DES/3DES, IKE

QoS

- Priority Queuing

Network Management/Configuration

- SNMP, MIB II, Bridge MIB, Telnet, Local RS-232 console port
- Automatic Frame Relay configuration
- NetWizard automatic identification of other network routers, ISDN configuration

Compression

- Stac LZS Compression

LAN Interface

- 10BaseT, RJ45 (MDI, MDI-X)

WAN Interface Options

P840 Series

- ISDN U
- ISDN S/T
- 2 POTS Ports (P843, P844)

P850 Series

- 56K/64K CSU/DSU
- T1/E1 CSU/DSU clear channel
- Universal WAN, DB 25 connector (V.35, X.21, V.24); use appropriate cable
- Automatic self configuration from default profiles

WAN Speed

- Up to 2.048 Mbps (E1 Connection)

Telecoms Approval

- NET3 (CE Europe)
- NI-1 (North America)

Dimensions

- 145 x 110 x 33 mm (W x D x H)

Weight

- 300 g

Temperature

- 2°C to 50°C

Humidity

- 20% to 80% non-condensing

Power

- 100-240 VAC 50-60Hz
50 watts maximum

Warranty

- Limited lifetime warranty

Technical Support

End User

- Free 60 day access to Perle's hotline technical support for all registered new products.
www.perle.com/support/warranty_reg.html

Value Added Resellers / Distribution Partners

- Free access to Perle's hotline technical support for all registered partners.
www.perle.com/partners/index.html

Technical Support

End User

- Free 60 day access to Perle's hotline technical support for all registered new products.
www.perle.com/support/warranty_reg.html

Value Added Resellers / Distribution Partners

- Free access to Perle's hotline technical support for all registered partners.
www.perle.com/partners/index.html

Maintenance Agreement

- To ensure rapid system recovery, maintenance agreements are available for Perle hardware. These include express part replacement in many areas, and free access to hotline technical support.
www.perle.com/support/service_sales.html

Free Software

- Perle provides free software upgrades to registered users via Perle's Web site.
www.perle.com/downloads

Visit the Perle Web site for up-to-date product support and technical information.
www.perle.com/products

Ordering Information

For Product Codes and Model Descriptions, please visit Perle's web site at www.perle.com/products and select Product Family Routers

P800 Series Configurations

Standard Model	10 User Model	VPN Model	WAN Interface	Voice Ports
P841	P841-10	P841-V	ISDN BRI S/T	-
P842	P842-10	P842-V	ISDN BRI U	-
P843	P843-10	P843-V	ISDN BRI S/T	2
P844	P844-10	P844-V	ISDN BRI U	2
P851	N/A	P851-V	Universal WAN	-
P852	N/A	P852-V	56/64K CSU/DSU	-
P853	N/A	P853-V	T1/E1 CSU/DSU	-



Headquarter Germany:
SPHINX Computer Vertriebs GmbH
Phone: +49 (0) 6201 75437
www.sphinxcomputer.de
mail@sphinxcomputer.de

Subsidiary France:
SPHINX Connect France
Phone: +33 (0) 2 51 09 26 60
www.sphinxconnect.com
mail@sphinxconnect.com

Subsidiary Germany:
SPHINX Connect GmbH
Phone: +49 (0) 711 7287 5750
www.sphinxconnect.de
mail@sphinxconnect.de

Branch Office Belgium
Phone: +32 26 39 39 48
www.sphinxconnect.com
belnux@sphinxconnect.com

Subsidiary Austria:
S-Connect Vertriebs GmbH
Phone: +43 (1) 504 84 78 0
www.s-connect.at
mail@s-connect.at

Branch Office Spain
Phone: +34 913 109 823
www.s-connect-espana.com
mail@s-connect-espana.com

Subsidiary Great Britain:
S-Connect Ltd.
Phone: +44 (0) 1276 203 10
www.s-connect.ltd.uk
mail@s-connect.ltd.uk

Sales Partner Switzerland:
VISONET AG
Phone: +41 41 768 05 80
www.visonet.ch
info@visonet.ch