

MultiModem® II

Mission-Critical 33.6K Corporate Modems



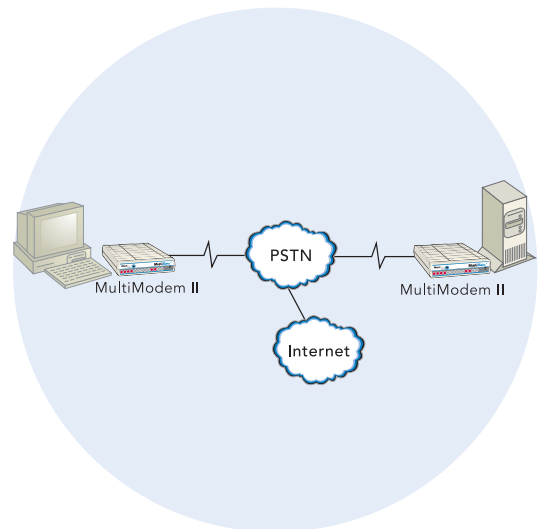
Benefits

- Synchronous or asynchronous support
- Dial-up or leased line operation
- Rock-solid reliability
- Best interoperability with other modems

The MultiModem® II corporate modem provides V.34/33.6K data and fax communications, the classic Multi-Tech feature set, an industrial chassis, and the best interoperability with other modems. This modem is an ideal choice for the corporate market running mission-critical applications.

Features

- V.34/33.6K
- Expanded Class 2 faxing at 14.4K
- Synchronous and asynchronous support
- External sync clock support
- Dial-up and 2-wire leased line support
- 4-wire leased line support and dial backup (BL models)
- Remote configuration for centralized setup and management
- Pass-through, fixed, and variable callback security
- Multi-Tech AT command set
- “Quick connect” command for reducing incoming call setup from 300 and 1200 bps devices by as much as 300 percent
- U.S. Caller ID reporting
- Phone number storage (10 numbers) for automatic or DTR dialing
- DTMF tone detection
- AS/400® settings, UUCP spoofing and 11-bit application support
- Flash memory for easy updates
- Five-year warranty



Highlights

Multi-Tech Classic Feature Set. The 33.6K MultiModem II modem provides the classic Multi-Tech feature set that has made the MT2834BA/BL a popular corporate modem. The modem's versatile configuration options, like the extended Class 2 command set, Multi-Tech patented Unix® UUCP spoofing, the "Quick Connect" command and 11-bit support make it an excellent choice for sync and async equipment.

Rock-Solid Reliability. The MultiModem II modem has years of proven field experience providing the best interoperability with any modem on the market today, saving administrators valuable time they might otherwise spend troubleshooting incompatibility issues. It is also housed in an industrial chassis. You can rest assured this modem will work!

Backup Service. When an application demands uninterrupted service, put an MT2834BL at each end for leased line operation with dial backup support. Connect each modem to a dial-up line and rest easy. If the primary synchronous connection goes down, the backup dial-up line can take over.

Callback Security. The MultiModem II modem provides password protection and helps reduce long distance charges for remote offices and users requiring access to the central site LAN. This modem supports 35 passwords with three configuration options suitable for remote office, mobile user and administrator applications. With the "fixed" callback option, the modem stores a password and the remote office's phone number. Once the remote site enters their password, the central site's modem calls back using the number stored in its database. The "variable" option lets users, such as road warriors, enter their password and a callback number each time they call. The "pass through" option is used to provide the security of password protection, while bypassing the call back process.

Remote Configuration. Whether you provide connectivity for a sales office 2,000 miles away or worldwide e-business services to your clients, the MultiModem II modem lets you take care of configuration from a central site.

Process Transactions Faster. To process incoming calls from 300 or 1200 bps equipment up to 300 times faster, the MultiModem II modem's custom "Quick Connect" command can shave as much as 30 seconds off the initial modem handshake. These few seconds quickly add up to dollars for banks, credit card verification businesses, etc., by reducing long distance calling costs and increasing processing volume.

Specifications

Rates

Data: V.34/33.6K & below
Fax: 14.4K & below

Standards

Data: Enhanced V.34, V.32bis, V.32, V.22bis
Error Correction: V.42, MNP® Class 3 & 4
Data Compression: V.42bis, MNP® Class 5
Fax: V.17, Group 3; expanded Class 2
Other: V.25bis

Connectors & Cables

Connectors: 1 DB25F (RS-232C/D); 2 RJ-11s
MT2834BL: 1 DB25F (RS-232C/D); 3 RJ-11s
Cables: 2 RJ-11s

Power

90-130v AC or 230v AC, 50/60 Hz

Physical Description

6.2" w × 1.4" h × 9.0" d; 2 lbs.
(15.8 cm × 3.6 cm × 22.9 cm; 0.9 kg)

Operating Environment

Operating Temp: +32° to +120° F (0 to +50° C)
Humidity Range: 25-85% noncondensing

Certifications

FCC Part 15B & 68, UL, IC CS03, & cUL; CE Mark

Ordering Information

Product	Description	Region
MT2834BA	V.34 Data/Fax Modem (d/u,2wLL)	US/Can
MT2834BAI	V.34 Data/Fax Modem (d/u,2wLL)	Euro/ROW
MT2834BL	V.34 Data/Fax Modem (d/u, 2/4wLL)	US/Can
MT2834BLIe	V.34 Data/Fax Modem (d/u, 2/4wLL)	Euro/ROW

Made in Mounds View, MN, U.S.A.

Trademarks / Registered Trademarks: MultiModem, Multi-Tech, and the Multi-Tech logo: Multi-Tech Systems, Inc. / All other products and technologies are the trademarks or registered trademarks of their respective holders.

World Headquarters
Tel: (763) 785-3500
(800) 328-9717
www.multitech.com

EMEA Headquarters
Multi-Tech Systems (EMEA)
United Kingdom
Tel: +(44) 118-959 7774

Multi-Tech Systems (EMEA)
France
Tel: +(33) 1 64 61 09 81