

MultiModem® II

Mission-Critical V.90 Corporate Modems



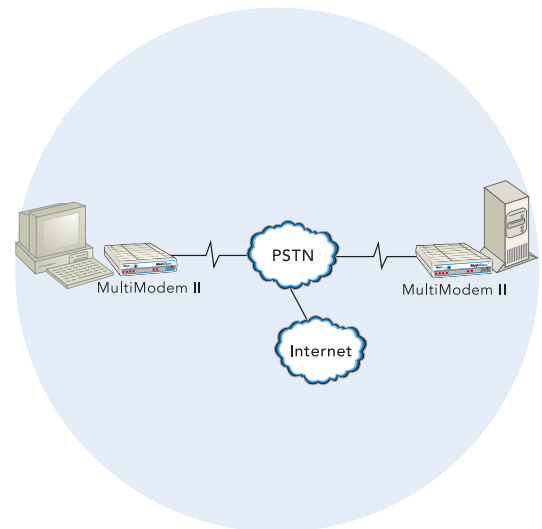
Benefits

- Synchronous or asynchronous support
- Dial-up or leased line operation
- LCD panel for configuration and diagnostics
- Rock-solid reliability

The MultiModem® II corporate modem provides V.90/56K data and fax communications, V.34 enhanced leased line operations, a robust smart feature set and an industrial chassis for rock-solid reliability. This modem is the ideal choice for the corporate market running mission-critical applications.

Features

- V.90/56K downloads (from V.90 servers) and 33.6K data rates for uploads or peer-to-peer transfers
- Class 1 and Class 2 faxing at 14.4K
- LCD panel for easy configuration and diagnostics
- Synchronous and asynchronous support
- Dial-up and 2-wire leased line support
- 4-wire leased line support and dial backup (BL models)
- Remote configuration for centralized setup and management
- Pass-through and fixed callback security
- U.S. Caller ID reporting
- Four phone number storage for automatic or DTR dialing
- DTMF tone detection
- AS/400® settings for IBM Mid-range systems
- Flash memory for easy updates
- Five-year warranty



Highlights

Easy Control. The V.90 MultiModem II modem offers quick and easy access to modem information. The front LCD panel provides status, configuration, and diagnostics. In addition, the V.90 model installs with fewer steps because its smarter preconfigured settings default to the most popular options users typically select.

High Speed. When connecting to a T1 or PRI ISDN host, corporate users gain V.90/56K downloading capabilities for more efficient transferring of information from the Internet, remote offices and client sites with the MultiModem II modem.

Backup Service. When synchronous applications demand uninterrupted service, put a MT5600BL at each end for leased line operation with dial backup support. Connect each modem to a dial-up line and rest easy. If the primary synchronous modem connection goes down, the backup dial-up line can take over.

Unmatched Reliability. The MultiModem II modem provides rock-solid reliability for mission critical applications. Housed in an industrial chassis, you can rest assured that this modem will work.

Callback Security. The MultiModem II modem provides password protection and helps reduce long distance charges for remote offices and users requiring access to the central site LAN. It supports 30 "fixed" accounts. With "fixed" callback security, the modem stores a password and the remote office's phone number. Once the remote site enters their password, the central site's modem calls back using the number stored in its database.

Remote Configuration. Whether you provide connectivity for a sales office 2,000 miles away or worldwide e-business services to your clients, the MultiModem II modem lets you take care of configuration from a central site.

Integrated Data Communications and Fax Software. The free bundled software has an easy-to-use graphical interface for Windows 95/98/NT.

Comprehensive Service and Support. The Multi-Tech commitment to service means we provide a five-year product warranty and service that includes free technical support and 24-hour web site.

Specifications

Rates

Data: 56K download speeds from digital V.90/K56flex servers; 33.6K upload & download speeds from non-V.90/K56flex servers & other client modems

Fax: 14.4K & below

Standards

Data: V.90/K56flex, enhanced V.34 & below

Error Correction: V.42

Data Compression: V.42bis, MNP® Class 5

Fax: V.17, Group 3; Class 1 & Class 2

Connectors & Cables

Connectors: 1 DB25F (RS-232C/D); 2 RJ-11s

Cables: 2 RJ-11s

Power

90-130v AC or 230v AC, 50/60 Hz

Physical Description

6.2" w × 1.4" h × 9.0" d; 2 lbs.

(15.8 cm × 3.6 cm × 22.9 cm; 0.9 kg)

Operating Environment

Temperature Range: +32° to +120° F (0° to +50° C)

Humidity Range: 25-85% noncondensing

Certifications

CE Mark

Safety: cUL, EN 60950, UL 60950

Telecom: CS03, FCC Part 68, TBR21

EMC: FCC Part 15 Class B, EN 55024

Ordering Information

Product	Description	Region
MT5600BA	V.90 Data/Fax Modem (d/u,2wLL)	US/Can
MT5600BA-EURO	V.90 Data/Fax Modem (d/u,2wLL)	Euro/ROW
MT5600BL	V.90 Data/Fax Modem (d/u, 2/4wLL)	US/Can
MT5600BL-EURO	V.90 Data/Fax Modem (d/u, 2/4wLL)	Euro/ROW

Made in Mounds View, MN, U.S.A.

Features and specifications are subject to change without notice.

Trademarks / Registered Trademarks: MultiModem, Multi-Tech, and the Multi-Tech logo: Multi-Tech Systems, Inc. / All other products and technologies are the trademarks or registered trademarks of their respective holders.

World Headquarters

Tel: (763) 785-3500
(800) 328-9717

www.multitech.com

EMEA Headquarters

Multi-Tech Systems (EMEA)
United Kingdom
Tel: +(44) 118-959 7774

Multi-Tech Systems (EMEA)
France
Tel: +(33) 1 64 61 09 81