

# RouteFinder® SOHO

## SOHO Security Appliance



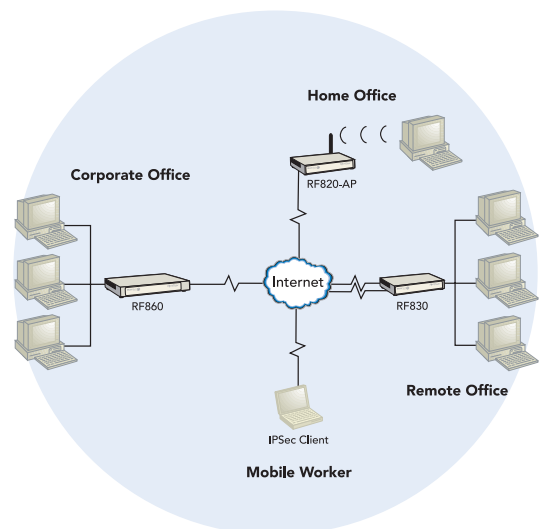
Multi-Tech's next generation RouteFinder® SOHO security appliance is ideal for the small branch office or telecommuter who needs secure access to the corporate LAN. In addition to providing one or two WAN Ethernet port(s) for DSL or cable broadband Internet access, it also offers both client-to-LAN and LAN-to-LAN VPN connectivity based on the IPsec or PPTP protocols. The RouteFinder SOHO security appliance provides 168-bit 3DES and AES encryption to ensure that your information remains private. In addition, it offers secure Internet firewall services and 802.11b/g Wi-Fi connectivity.

## Features

- One (RF820/RF825 models) or two (RF830 models) WAN Ethernet port(s) connect to a DSL or cable modem(s)
- Secure 802.11b/g wireless connectivity option (AP models)
- WEP, WPA, WPA2, TKIP and AES wireless security (AP models)
- Supports IPsec VPN tunnels and PPTP tunnels for secure LAN-to-LAN and client-to-LAN access over the Internet
- 3DES and AES encryption
- Dual WAN load balancing (RF830 models)
- Internet and VPN failover (RF830 models)
- Shared Internet access via PPPoE, DHCP or static IP
- Serial port for automatic dial-backup if your broadband connection goes down (RF820 models)
- Integrated cellular EDGE or CDMA 1xRTT modem connectivity (RF825 models)
- Built-in 4-port 10/100M bps switch
- Stateful Packet Inspection firewall with packet filter rules, DNAT, SNAT and IP MASQUERADE
- Built-in dynamic DNS client
- Supports VPN tunneling using FQDN
- Protects your LAN against Denial of Service (DoS) attacks
- Configuration and management using any web browser
- Internet access control tools provide client and site filtering
- Flash memory for easy updates
- IP address mapping/port forwarding
- Two-year warranty

## Benefits

- Stateful Packet Inspection firewall
- Up to 15 IPsec VPN tunnels
- Wired or Wi-Fi® LAN connectivity
- Broadband, cellular or dial-up WAN connectivity



## Highlights

**Secure VPN Connections.** The RouteFinder SOHO security appliance uses the IPsec or PPTP industry standard protocol, data encryption, and the Internet to provide high-performance, secure VPN connections. For LAN-to-LAN connectivity, the RouteFinder SOHO security appliance utilizes the IPsec protocol to provide up to 15 tunnels with strong 3DES or AES encryption using IKE and PSK key management. For client-to-LAN connectivity, Multi-Tech provides optional IPsec client software allowing road warriors secure access to the company's internal network.

The RouteFinder SOHO security appliance also supports remote users that want to use the PPTP VPN client built into the Windows operating system. This provides 40-bit or 128-bit encryption, user name and password authentication.

**Connect Multiple Users to the Internet with Broadband Speed.**

With the RouteFinder SOHO security appliance, multiple users can share access to the Internet with only one IP account. The WAN Ethernet port(s) support DSL or cable speeds of up to 20M bps.

**Wi-Fi Connectivity Option.** The RouteFinder SOHO AP models provide secure wireless 802.11b/g high-speed wireless connectivity for even greater flexibility and use. With Wi-Fi Protected Access™ 2 (WPA2), the RouteFinder SOHO security appliance offers the highest available security for wireless traffic. In addition, it engages wireless firewalling to provide control over the communications between the appliance and connecting clients as well as providing your guests and customers with wireless Internet-only access.

**Built-in 10/100 Switch.** The integrated 4-port 10/100M bps switch eliminates the need for an additional hub or switch to connect users not on a LAN. It ensures high-speed transmission and can serve as a completely dedicated full duplex backbone.

**Network Security.** The RouteFinder SOHO appliance provides network layer security utilizing Stateful Packet Inspection, the sophisticated firewall technology found in large enterprise firewalls, to protect the network against intruders and Denial of Service (DoS) attacks. It also uses Network Address Translation (NAT) to hide internal, non-routable IP addresses and allows internal hosts with unregistered IP addresses to function as Internet-reachable servers.

**Dual WAN Load Balancing, Internet and VPN Failover.** The RouteFinder SOHO security appliance (RF830 models) has a second WAN port for Internet access. This allows for two separate ISP connections giving administrators the ability to balance traffic by distributing it over the two links. In addition, if one port were to go down, the RouteFinder appliance would automatically re-route all Internet and VPN traffic to the other connection. The second WAN port greatly enhances performance and system uptime.

**Cellular Wireless Connectivity Options.** The RouteFinder SOHO security appliance (RF825 models) provide an integrated cellular EDGE or CDMA 1xRTT modem to be used as your primary Internet connection, or as a back-up to a wired connection. With packet data rates up to 240K bps for EDGE modems, and up to 153.6K bps for CDMA modems, the RouteFinder RF825 security appliance is ideal for mobile

applications or as a temporary connection during a LAN/WAN failure.

**Automatic Dial Backup.** The RouteFinder SOHO (RF820 models) security appliance also provides an additional serial port that, when connected to a dial-up modem or ISDN terminal adaptor, can serve as a backup resource for Internet access if your cable or DSL service goes down. It can also serve as the primary connection if you do not have broadband connectivity yet in your area.

**Virtual Server Support.** In addition to providing shared Internet access, the RouteFinder SOHO security appliance can support a web, ftp or other Internet servers. Once configured, it only accepts unsolicited IP packets addressed to the web, ftp or other specified servers.

**Dynamic DNS Client.** The RouteFinder SOHO security appliance has a built in Dynamic DNS client that is compatible with DynDNS.org. It automatically sends an update to the DynDNS.org update server if the WAN IP address changes. A registered Dynamic DNS account allows you to host your own web site, mail server, or other services on the Internet without having to obtain a static IP address or keep track of a dynamic IP address. It also aids in creating static-to-dynamic or dynamic-to-dynamic IPsec VPN tunnels. In addition, with a Dynamic DNS account you can establish a PPTP VPN tunnel behind the RouteFinder SOHO security appliance by configuring your PPTP client to connect to yourhostname.dyndns.org instead of a dynamic IP address.

**Fully Qualified Domain Name (FQDN) Feature.** The FQDN featured on the RouteFinder SOHO security appliance allows you to utilize a static name in the IPsec VPN setup, like "branchoffice.dyndns.org", instead of a dynamic IP address, to create static-to-dynamic or dynamic-to-dynamic VPN IPsec tunnels. This allows all of the IPsec VPN connections to act like static-to-static connections. The RouteFinder SOHO security appliance checks the FQDN IPsec configuration every two minutes for IP address changes. If the IP address is different than the last time it checked, it drops the current tunnel and creates a new one. This helps to keep IPsec VPN tunnels readily available with minimal interruptions in data communication.

**Optional VPN Client Software.** Multi-Tech provides easy-to-use IPsec VPN client software that transparently secures Internet communications anytime, anywhere. A 30-day free trial CD is included with the RouteFinder SOHO security appliance.

**RouteFinder All-in-one Security Appliance.** Multi-Tech's next generation RouteFinder all-in-one security appliance is designed to maximize network security without compromising network performance. It offers an ICSA-certified Stateful Packet Inspection firewall for the ultimate in firewall security. It also provides optional e-mail anti-virus protection and content filtering, as well as free spam filtering. In addition, it provides secure IPsec and PPTP VPN connections to securely connect telecommuters, remote offices, customers or suppliers to the corporate office. Go to [www.multitech.com/products](http://www.multitech.com/products) for more details.

**Comprehensive Service and Support.** The Multi-Tech commitment to service means we provide a two-year product warranty and service that includes free telephone technical support, 24-hour web site and ftp support.

Features	RF820 / RF820-AP	RF825 / RF825-AP	RF830 / RF830-AP
<b>Appliance</b>			
Ethernet Ports	4 x 10/100BaseT (LAN) 1 x 10/100BaseT (WAN)	4 x 10/100BaseT (LAN) 1 x 10/100BaseT (WAN)	4 x 10/100BaseT (LAN) 2 x 10/100BaseT (WAN)
802.11b/g Wireless Networking	Yes - RF820-AP	Yes - RF825-AP	Yes - RF830-AP
Recommended Network Users	25	25	25
<b>Firewall Features</b>			
Stateful Packet Inspection	Yes	Yes	Yes
Network Address Translation (NAT)	Yes	Yes	Yes
Filtering (Port Number & IP Address)	Yes	Yes	Yes
Virtual Server	Yes	Yes	Yes
Denial of Service Protection (DoS)	Yes	Yes	Yes
Firewall Throughput	20M bps	20M bps	20M bps
<b>VPN Features</b>			
Remote User (Client-to-LAN)	Yes - IPsec and PPTP	Yes - IPsec and PPTP	Yes - IPsec and PPTP
Branch Office (LAN-to-LAN)	Yes - IPsec	Yes - IPsec	Yes - IPsec
3DES/AES Encryption	Yes	Yes	Yes
Encryption Throughput	3M bps	3M bps	3M bps
VPN Using FQDN	Yes	Yes	Yes
Recommended VPN Tunnels (Total)	Up to 15	Up to 15	Up to 15
<b>Other Features</b>			
Web Based (HTTP)	Yes	Yes	Yes
E-mail Alerts	Yes	Yes	Yes
Syslog	Yes	Yes	Yes
Intrusion Logging	Yes	Yes	Yes
WEP, WPA, WPA2, TKIP, & AES	Yes - RF820-AP	Yes - RF825-AP	Yes - RF830-AP
Automatic Dial-backup (Serial Port)	Yes	Yes	No
Dual WAN Load Balancing	No	No	Yes
Internet/VPN Failover	No	No	Yes
Integrated EDGE Modem	No	Yes - RF825-E & RF825-E-AP	No
Integrated CDMA 1xRTT Modem	No	Yes - RF825-C & RF825-C-AP	No
PPPoE	Yes	Yes	Yes
DHCP Client/Server	Yes	Yes	Yes
Built-in Dynamic DNS Client	Yes	Yes	Yes
Multiple Public IP's on WAN	Yes	Yes	Yes
Warranty	2-years	2-years	2-years
<b>Specifications</b>			
Power Supply	12 VDC, 1A	9 VDC, 1.7A	12 VDC, 1A
Physical Description	9.75" w x 1.5" h x 6.5" d; 2.4 lbs. (24.8 cm x 3.8 cm x 16.5 cm; 1.0 kg.)	6.4" w x 1.2" h x 6" d; 1.25 lbs. (16.3 cm x 3.0 cm x 15.2 cm; .56 kg.)	9.75" w x 1.5" h x 6.5" d; 2.4 lbs. (24.8 cm x 3.8 cm x 16.5 cm; 1.0 kg.)
Temperature Range	+32° to +120° F (0° to 50° C)	+32° to +120° F (0° to 50° C)	+32° to +120° F (0° to 50° C)
Humidity	25-85% noncondensing	25-85% noncondensing	25-85% noncondensing
Approvals	FCC Part 15 (Class B), CE Mark, UL 60950	FCC Part 15 (Class B), CE Mark, UL 60950	FCC Part 15 (Class B), CE Mark, UL 60950

## Ordering Information

Product	Description	Region
RF820*	SOHO Security Appliance	Global
RF825*	SOHO Security Appliance	Global
RF830*	SOHO Security Appliance	Global

\* Specify country when ordering. Use ordering codes for specific build options. Go to [www.multitech.com](http://www.multitech.com) for detailed product model numbers.

Features and specifications are subject to change without notice.

**Trademarks / Registered Trademarks:** RouteFinder, Multi-Tech, and the Multi-Tech logo: Multi-Tech Systems, Inc. / Wi-Fi is a registered trademark of the Wi-Fi Alliance. / All other products and technologies are the trademarks or registered trademarks of their respective holders.

## Ordering Codes

-AP	802.11b/g Access Point
-C	CDMA2000 1xRTT
-E	EDGE Class 10
-N1	Generic CDMA, Requires Provisioning (A-key = Random)
-N2	Sprint CDMA
-N9	Generic CDMA, Requires Provisioning (A-key = 0)
-N14	Alltel CDMA

VPN Client Software	Description	Region
RFIPSC2-1	IPsec VPN Client-1 User	Global
RFIPSC2-5	IPsec VPN Client-5 User	Global
RFIPSC2-10	IPsec VPN Client-10 User	Global

### World Headquarters

Tel: (763) 785-3500  
(800) 328-9717

[www.multitech.com](http://www.multitech.com)

### EMEA Headquarters

Multi-Tech Systems (EMEA)  
United Kingdom

Tel: +(44) 118-959 7774

Multi-Tech Systems (EMEA)  
France

Tel: +(33) 1 49 19 22 06

