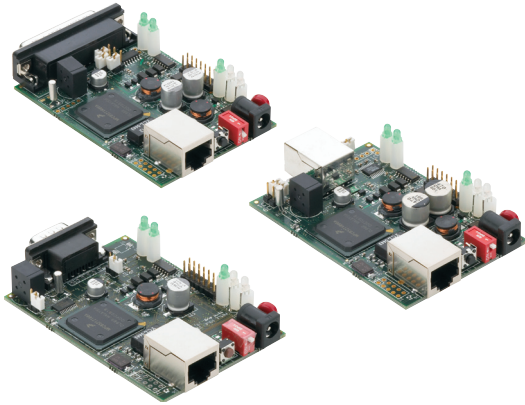


IOLAN SDS1-B

Secure Board Level Serial to Ethernet Servers



Features and Benefits

- **Software selectable EIA/RS 232/422/485 interface**
- **AES, 3DES encryption over SSH or SSL sessions**
- **Next Generation IP support (IPV6) for investment protection and network compatibility**
- **High performance in a space saving compact size**
- **Port buffering for data capture and analysis**
- **Power over serial cable models**

For embedded serial to Ethernet connectivity applications, the IOLAN SDS1-B is the most advanced series of board level device servers available. Delivering high performance in a compact size, an IOLAN SDS1-B offers extensive security, flexibility and next generation IP technology making it ideal for providing an Ethernet capability for serial based equipment.

Secure Serial Connectivity

IOLAN SDS1-B device servers provide secure access to serial equipment through an IP network. Sensitive data is protected through standard encryption tools such as Secure Shell (SSH) and Secure Sockets Layer (SSL).

Advanced IP Technology

With support for Next Generation IP (IPV6), an IOLAN SDS1-B provides organizations with the investment protection today to meet the compatibility needs of networks tomorrow.

Flexible and Reliable Serial to Ethernet Connections

An IOLAN SDS1-B is ideal for connecting serial based COM port, UDP or TCP socket based applications to remote devices. Perle's TruePort V5 re-director provides fixed TTY or COM ports to serial based applications enabling communication with remote devices connected to Perle device servers either in encrypted or clear text modes. You can also tunnel serial data between devices across an IP network.

Perle's Device Management software provides better centralized control of multiple units resulting in maximum uptime for your remote equipment.

Technical Specifications

Processor

- MPC852T, 66 Mhz, 87 MIPS

Network/Ethernet

- 1 x 10/100Mb RJ45

Protocols

- IPV6, IPV4, TCP/IP, Reverse SSH, SSH, SSL, CIDR, RIPV2/MD5, ARP, RARP, UDP, UDP Multicast, ICMP, BOOTP, DHCP, TFTP, SNTP, Telnet, raw, reverse Telnet, LPD, RCP, DNS, WINS, HTTP, HTTPS, SMTP, SNMPV3, PPP, PAP/CHAP, SLIP, CSLIP

Security and Authentication

- SSHV1 and SSHV2
- SSL V3.0/TLS V1.0, SSL V2.0
- SSL Server and SSL client mode capability
- Encryption: AES (256/192/128), 3DES, DES, Blowfish, CAST128, ARCFOUR(RC4), ARCTWO(RC2)
- Hashing Algorithms: MD5, SHA-1, RIPEMD160, SHA1-96, and MD5-96
- Key exchange: RSA, EDH-RSA, EDH-DSS, ADH
- X.509 Certificate verification: RSA, DSA
- Certificate authority (CA) list
- Local database
- RADIUS Authentication and Accounting
- TACACS+, LDAP, NIS, Kerberos
- RSA SecureID-agent or via RADIUS

- IP Address filtering
- Disable unused daemons

Management

- Web browser or secure web browser via https (SSL/TLS)
- Perle DeviceManager software to manage single or multiple device servers
- CLI – Telnet, SSH, shared console port
- SNMP, MIB II, Perle MIB, read and write capabilities
- SYSLOG
- Port Buffering – local or 3DES encrypted to NFS server

Serial Port(s)

- Software selectable EIA/RS-232/422/485
- Full modem and hardware flow control
- 50bps to 230Kbps for EIA-232
- up to 3.6Mbps for EIA-422/485
- DB25M, DB25F, DB9M or RJ45 connectors
- SUN Break Safe
- Full bidirectional modem support
- 15Kv ESD protection on all signals

Interface Modes

- EIA 232 full duplex
- EIA 422 full duplex
- EIA 485 4 wire, full duplex
- EIA 485 2 wire, half duplex, with echo
- EIA 485 2 wire, half duplex, without echo

Indicators

- Power/Ready
- Network Link activity
- Serial: Transmit and Receive data LEDs

Dimensions, Weight

- Dimension (L x W x H)
9.0 x 5.8 x 2.3 (cm), 3.5 x 2.3 x 0.9 (in)
Weight – 0.22 kg (0.5 lbs)

Power

- Power via External power 9-30V DC, 4.8 Watts – standard barrel socket
- IOLAN SDS1-B over serial cable (9-30VDC)

Fixed TTY/COM Port Emulation Software

- TruePort

Environmental

- Operating temperature:
0°C to 55°C, 32°F to 131°F
- Storage temperature:
-40°C to 66°C, -40°F to 150°F

Approvals

- FCC Part 15A, CE, CAN/CSA 22.2, UL 60950, EN 55022 Class A, EN 55024 Class A

Warranty

- 2 year limited warranty

Model		Features				Part Number		
	Ethernet	Serial Ports	Interface Type	Serial Connector	Power From Serial	USA	Europe	UK
IOLAN SDS1-B	10/100	1	EIA-232/422/485	DB 25M	•	04030550	04030550	04030550
IOLAN SDS1-B	10/100	1	EIA-232/422/485	RJ45	•	04030540	04030540	04030540
IOLAN SDS1-B	10/100	1	EIA-232/422/485	DB 25F	•	04030560	04030560	04030560
IOLAN SDS1-B	10/100	1	EIA-232/422/485	DB9M		04030570	04030570	04030570

