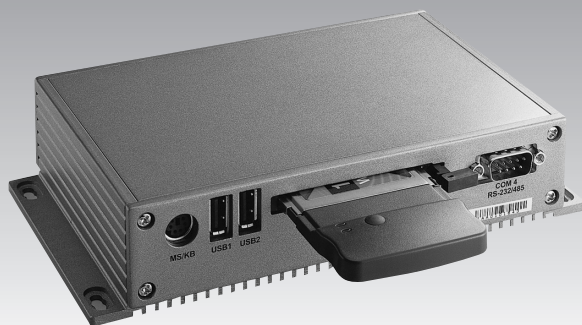


UNO-2059E

AMD GX2 UNO w/4 x COM, LAN, PC Card

NEW



Features

- Onboard GX2 400 MHz
- 2 x RS-232/485, 2 x RS-232/422/485 with automatic flow control
- 1 x 10/100Base-T RJ-45 port
- 2 x USB ports and 1 x type I/II PC Card
- One programmable diagnostic LED and buzzer
- Windows® CE 5.0, Windows XP Embedded SP2, and Linux ready solution

Introduction

Advantech's UNO-2059E is an X86-grade platform that offers USB and PC card interfaces to fulfill I/O device expansion needs. In addition, it also offers two RS-232/485 and two RS-232/422/485 communication ports with automatic flow control functionality. The UNO-2059E is an ideal compact solution for large computing and communication requirements.

UNO-2059E comes with a Windows CE OS offering a pre-configured image with optimized onboard device drivers. Microsoft Windows CE is a compact, highly efficient, real-time operating system designed for embedded systems without mechanical HDD limitations. To expand storage capability, the UNO-2059E allows the addition of an external 2.5" HDD using Advantech's UNO HDD expansion kit. It can be used for large data backup requirements and popular OS installations such as Microsoft Windows and Linux OS. Significant anti-vibration (1G w/HDD) is maintained even with the mechanical HDD inside.

Specifications

General

- **Dimensions (W x D x H)** 188.8 x 106.5 x 35.5 mm (7.5" x 4.2" x 1.4")
- **Enclosure** Aluminum
- **Mounting** Wall, DIN 35 rail
- **Power Consumption** 15 W (typical)
- **Power Input** 10 ~ 48 V_{DC} (e.g. +24 V @ 1 A) (Min. 24 W), AT
- **Weight** 0.8 kg
- **OS Support** Windows XP Embedded, Windows 2000 & XP, Windows CE 5.0, Linux

System Hardware

- **CPU** AMD GX2 400 MHz
- **Memory** 256 MB DDRAM on board
- **Indicators** Power LED, IDE LED, one programmable diagnostic LED and buzzer
- **Keyboard/Mouse** 1 x PS/2
- **Storage** SSD: 1 x internal type I/II CompactFlash® slot
HDD: expansion kit for one standard 2.5" HDD (Option)
- **VGA** DB15 connector
- **Watchdog Timer** Programmable

Communications

- **Serial Ports** 2xRS-232/485, 2xRS-232/422/485
- Automatic RS-485 data flow control
- RS-422/485 surge protection up to 2,000 V_{DC}
- **Serial Port Speed** RS-232: 50 ~ 230.4 kbps;
RS-422/485: 50 ~ 921.6 kbps (Max.)
- **USB Ports** 2 x USB ports, OpenHCI, Rev. 1.1 compliant
- **LAN** 1 x 10/100Base-T RJ-45 port

PC Card

- 1 x PC card slot
- Supports CardBus (Card-32) Card and 16-bit (PCMCIA 2.1/JEIDA4.2) Card
- Supports +5 V, +3.3 V and 12 V @ 120 mA Power

Environment

- **Humidity** 95 % @ 40° C (non-condensing)
- **Ingress Protection** IP40
- **Operating Temperature** -10 ~ 55° C (14 ~ 131° F)
- **Shock Protection** IEC 68 2-27
CompactFlash®: 20 G @ DIN, half sine, 11 ms,
50 G @ Wall/Panel, half sine, 11 ms
- **Vibration Protection** IEC 68 2-6
CompactFlash®: 2 Grms @ sine, 5 ~ 500 Hz,
1 Oct./min, 1hr/axis.
HDD: 1 Grms @ sine, 12 ~ 300 Hz, 1 Oct./min,
1 hr/axis.

Ordering Information

- **UNO-2059E-IDA0E** GX2 400 M, 256 MB RAM UNO-2059E

Accessories

- **UNO-HD20-AE** UNO-200 HDD expansion kit
- **UNO-FPM21-AE** UNO & FPM integration kit
- **UNO-ADAM42-AE** UNO-2000 & ADAM integration kit