



### High Performance Multi-port Modem Cards

#### Features and Benefits:

- PCI Plug and Play for easy installation
- High speed V.92 integrated modems for quicker connect times and upload speeds
- PCI 2.3 compliant for universal 3.3/5v PCI slots
- V.34/33.6 Super G3 fax to reduce transmission times
- Scalable solution from 4 to 64 modems per server
- Support for multiple operating systems
- Remote configuration for centralised setup and management
- Lifetime warranty for security and peace of mind

#### Applications:

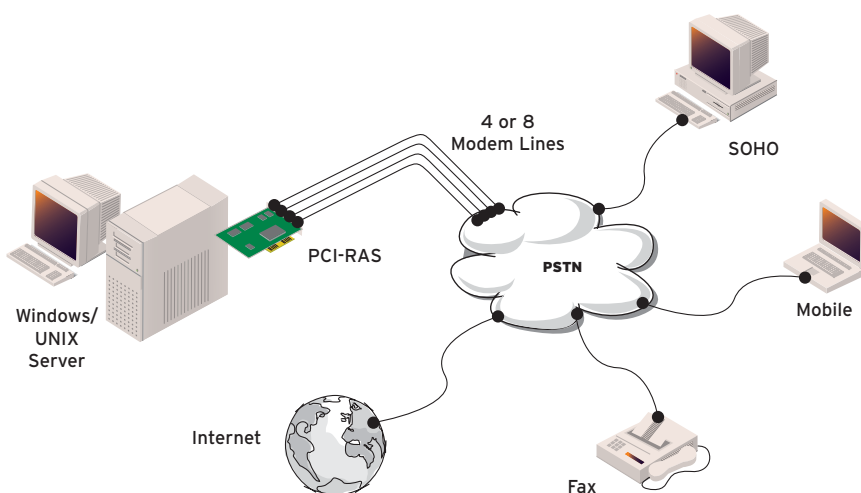
- Remote access
- Internet access
- Fax servers (class 1.0 and 2.1 Super G3)
- Dial-up data acquisition

The Perle PCI-RAS card provides a simple solution coupled with high performance to deliver multiple voice, fax and data communications over V.92 56K integrated modems. The applications it can serve include Remote Access, Internet access and Fax Serving for either Windows or UNIX/Linux operating systems.

#### Providing Access

PCI-RAS works with most of today's remote access software, including Windows RAS, to provide an easy to administer dial-in/dial-out solution for remote workers and customers. Also, by combining off-the-shelf fax software with PCI-RAS, a powerful fax server for transmission and receipt can be easily created.

PCI-RAS comes as a 4 or 8 integrated modem card. And, multiple cards can be installed to cater for most application sizes.



#### Ease of Installation

PCI-RAS cards conveniently integrate all necessary hardware and driver elements right in to the server for simple one-step configuration of the multiple modems. There is minimal cabling with no stacks of external modems or power supplies. Standard phone lines are simply connected to the ports on the PCI-RAS. The cards install easily using standard operating systems procedures or installation wizards, and have been designed to ensure compatibility with a full range of third party communications software.

#### Class Leading Support and Warranty

The Perle PCI-RAS is backed by the best service and support in the industry including Perle's unique lifetime warranty.



## Technical Specifications Features

- T1 16C754 enhanced UART
- 64 Byte transmit and receive FIFOs
- Hardware flow control
- Single interrupt per card
- Software controlled hardware reset for each modem
- Data and fax operation
- Industry standard Multitech modem chipset
- Up to 8 cards per server

## Software

### Drivers supplied for:

- Citrix
- Windows®2000
- Windows®NT
- Windows®9x/ME
- SCO OpenServer
- SCO Unixware
- Linux
- Solaris
- Windows® Server 2003

### Modem Support:

- 56 Kbps data rate
- 230.4 Kbps data-modem interface
- V.92
- V.34 enhanced
- V.34
- V.32
- V.22
- Bell 212A + 103/113
- V.21 + V.23
- Error Correction V.42 (LAP-M or MNP 3-4)
- Data Compression ITU-T, V-44, V-42bis, MNP 5

### Facsimile:

- Send and receive up to 33.6 Kbps
- Super G3, Group 3, Class 1 and Class 2.1

### Host Interface:

- 32 Bit PCI Bus
- Full PCI plug and play compliant
- Single interrupt per card

### Dimensions:

- PCI-RAS 4: 202 mm x 114 mm
- PCI-RAS 8: 312 mm x 106 mm

### Operating Temperature:

- 10°C to 45°C

### Relative Humidity:

- 5% to 90% non-condensing

### Approvals:

- FCC Part 68, Class B, CE, CTR21, IEC 60 950, ATick

### Warranty:

- Limited lifetime warranty

### Technical Support End User

- Free 60 day access to Perle's hotline technical support for all registered new products.

[www.perle.com/support/warranty\\_reg.html](http://www.perle.com/support/warranty_reg.html)

### Value Added Resellers / Distribution Partners

- Free access to Perle's hotline technical support for all registered partners.

[www.perle.com/partners/index.html](http://www.perle.com/partners/index.html)

### Free Software

- Perle provides free software upgrades to registered users via Perle's Web site.

[www.perle.com/downloads](http://www.perle.com/downloads)

Visit the Perle Web site for up-to-date support and availability information.

[www.perle.com/products](http://www.perle.com/products)

### Ordering Information

For Product Codes and Model Descriptions, please visit Perle's Web site at

[www.perle.com/products](http://www.perle.com/products) and select Product Family Multi-Modem Cards



**Headquarter Germany:**  
SPHINX Computer Vertriebs GmbH  
Phone: +49 (0) 6201 75437  
[www.sphinxcomputer.de](http://www.sphinxcomputer.de)  
[mail@sphinxcomputer.de](mailto:mail@sphinxcomputer.de)

**Subsidiary France:**  
SPHINX Connect France  
Phone: +33 (0) 2 51 09 26 60  
[www.sphinxconnect.com](http://www.sphinxconnect.com)  
[mail@sphinxconnect.com](mailto:mail@sphinxconnect.com)

**Subsidiary Germany:**  
SPHINX Connect GmbH  
Phone: +49 (0) 711 7287 5750  
[www.sphinxconnect.de](http://www.sphinxconnect.de)  
[mail@sphinxconnect.de](mailto:mail@sphinxconnect.de)

**Branch Office Belgium**  
Phone: +32 26 39 39 48  
[www.sphinxconnect.com](http://www.sphinxconnect.com)  
[benelux@sphinxconnect.com](mailto:benelux@sphinxconnect.com)

**Subsidiary Austria:**  
S-Connect Vertriebs GmbH  
Phone: +43 (1) 504 84 78 0  
[www.s-connect.at](http://www.s-connect.at)  
[mail@s-connect.at](mailto:mail@s-connect.at)

**Branch Office Spain**  
Phone: +34 913 109 823  
[www.s-connect-espana.com](http://www.s-connect-espana.com)  
[mail@s-connect-espana.com](mailto:mail@s-connect-espana.com)

**Subsidiary Great Britain:**  
S-Connect Ltd.  
Phone: +44 (0) 1276 203 10  
[www.s-connect.ltd.uk](http://www.s-connect.ltd.uk)  
[mail@s-connect.ltd.uk](mailto:mail@s-connect.ltd.uk)

**Sales Partner Switzerland:**  
VISONET AG  
Phone: +41 41 768 05 80  
[www.visonet.ch](http://www.visonet.ch)  
[info@visonet.ch](mailto:info@visonet.ch)