



Secure KVM CATx Switches
with BIOS-level control

ADDERView® CATx 4000

Secure KVM CATx Switches with BIOS-level control of up to 24 multi-platform servers



PRODUCT IN BRIEF

The ADDERView CATx Series is a range of secure, KVM via CATx switches that provide 4 concurrent local, remote or global users with BIOS-level control of up to 24 multi-platform servers.

A 'plug-and-play', 1U appliance, the ADDERView CATx is a completely self-contained system that installs in minutes combining high security, flexibility, integrated remote power control, faultless quality video and optional CD quality audio.

The ADDERView CATx supports 16 or 24 CATx computer connections, 4 simultaneous users (1x local PS/2 or USB, 4 x remote over CATx).

FEATURES

Faultless video quality

The ADDERView CATx series provides exceptionally high video performance to local, remote and global users alike, supporting up to 1900x1440 resolutions with DDC emulation.

True multi-platform support

The ADDERView CATx series supports PS/2, USB and Sun. Country code reporting, DDC and keyboard and mouse emulation ensure faultless operation.

PS/2 or USB keyboard and mouse control

Any PS/2 or USB style keyboard and mouse may be used to control the ADDERView CATx series.

Easy cascade

Expand using CATx cascade connections with simple user intuitive set up.

Optional CD quality audio

The ADDERView CATx switches provide CD quality audio to users when optional audio enabled CAM modules are used.

Power control

Providing complete reboot function, the ADDERView CATx series interfaces with power switches via a dedicated RS232 port.

Local User

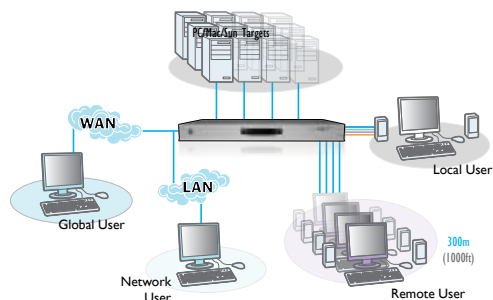
- Choice of PS/2 or USB keyboard and mouse control.

Remote User

- Up to 300m from computer using Adder extenders.

Computer Access Modules

- Flash upgradeable CAMs available for PS/2, USB and Sun keyboard and mouse support with optional audio.



ADDERView® CATx 4000

Secure KVM CATx Switches with BIOS-level control of up to 24 multi-platform servers

ABOUT ADDER

Adder is a leading developer and thought leader in connectivity solutions. Adder's advanced range of KVM switches, extenders and IP solutions enable the control of local, remote and global IT systems across the enterprise. The company distributes its products in more than 60 countries through a network of distributors, resellers and OEMs. Adder has offices in the United States, United Kingdom, Germany, the Netherlands, Sweden, China and Singapore.

To find out more, visit:
<https://www.adder.com>.

TECHNICAL SPECIFICATIONS

Operating Systems and Software compatibility

Software: All commonly known software and operating systems including Windows®, Linux®, macOS®, and Sun OS.

Computer and remote CATx user connections

All RJ45 style

Local KVM console connection

Video: HDD15 / VGA.

Keyboard/Mouse: MiniDin6 / USB type A.

Audio: 3.5mm stereo jack

Network port (ADDERView IP models only)

RJ45 10/100Mb auto-sensing Ethernet port

Physical design

ADDERView CATx: 1U high metal case
482mm/19" (w), 215mm/8.5" (d),
45mm/1.8" (h)

Single rack kit included

Power connection

IEC style power lead (100 – 240V AC, 50-60Hz). Redundant via 2.5mm DC jack (5V DC, 4A)

Other connectors

DB9 female for flash upgrade, syncing boxes and other special functions.
DB9 male for RS232 triggered power switches.

Operating temperature

0°C to 40°C / 32°F to 104°F

Approvals

CE, FCC, UKCA

ORDERING INFORMATION

ADDERView CATx 4000

CATx 16 port version: **AVX4106-XX**

CATx 24 port version: **AVX4024-XX**

XX	= Mains Lead Country Code:
UK	= United Kingdom
US	= United States
EURO	= Europe
AUS	= Australia

ADDITIONAL ACCESSORIES

CAM - Computer Access Modules:

DisplayPort® connector, USB plus audio: **CATXDP-USBA**

Mini DisplayPort® connector, USB plus audio: **CATX-MDP-USBA**

VGA and PS/2 only: **CATX-PS2**

VGA, PS/2 plus audio: **CATX-PS2-A**

VGA and USB: **CATX-USB**

VGA, USB plus audio: **CATX-USB-A**

VGA, Sun with audio: **CATX-SUNA**

Adder X100/X200 Extender products: **X100/R, X100A/R, X100AS/R, X200/R, X200A/R, X200AS/R**



Example CAM: CATX-USB-A

RELATED PRODUCTS

Adder offer a vast range of products to suit your needs. Other products you may be interested in include:

ADDERView CATxIP 5000
AVX5016IP



ADDERView CATx IP
AVX4016; AVX4016IP;
AVX4024; AVX4024IP



ADDERView CATxIP 1000
AVX1008IP; AVX1016IP



Adder and the Adder logo are trademarks of Adder Technology Ltd, Cambridge, UK. All other trademarks are the property of their respective owner and may be registered in the United States Patent and Trademark Office and in other countries. Copyright 2021 | Adder Technology Ltd. | ADDER_DS095_EN_v3

Information contained in this data sheet is up-to-date and correct as at the date of issue. As Adder Technology cannot control or anticipate the conditions under which this product may be used, each user should review the information in the specific context of planned use. Images are for illustrative purposes only.