

Model DRPM25

Powered by

ADVANTECH

www.advantech-bb.com



DRPM25 shown mounted on product
(product not included)

- + Panel-mount your DIN rail designed devices
- + Convenient, easy-to-use mounting solution
- + 1018 carbon steel, clear zinc plated

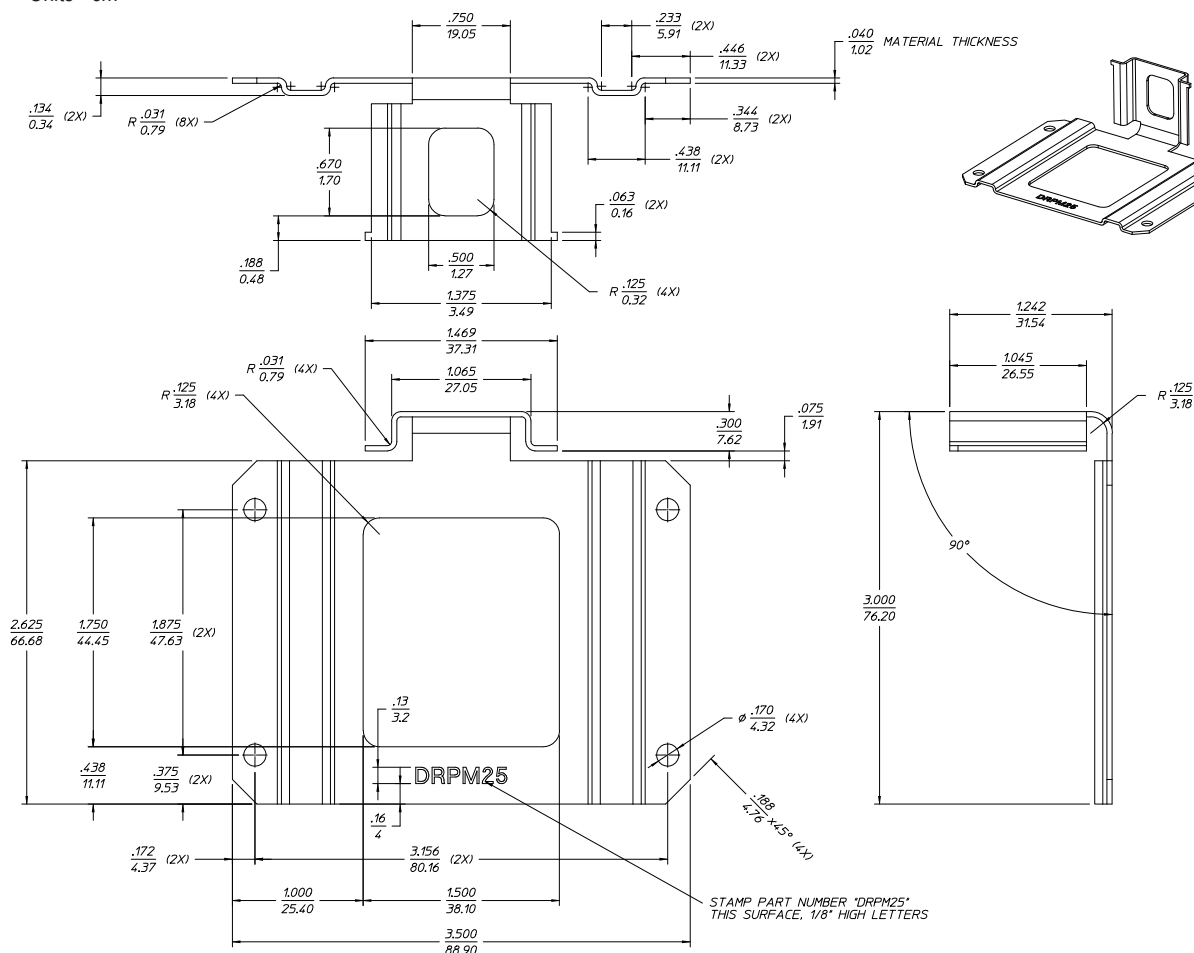
With its user-friendly design, Model DRPM25 allows you to panel mount DIN rail devices anywhere. Just attached the plate-side of the bracket to any surface like a sub-panel, wall or shelf. Then, snap your DIN mount device onto the bracket's DIN rail extension. Challenging installation problems are handled easily and securely.

ORDERING INFORMATION

MODEL NUMBER	DESCRIPTION
DRPM25	35mm DIN Rail to Panel Mount Bracket, 25mm wide

MECHANICAL DRAWING

Units - cm



All product specifications are subject to change without notice.

DRPM25 5117ds

B+B SMARTWORX

Powered by

ADVANTECH

orders@advantech-bb.com
support@advantech-bb.com

Corporate Headquarters: 707 Dayton Road, PO Box 1040 Ottawa, IL 61350 USA 815-433-5100 Fax 433-5104
European Office: Westlink Commercial Park, Oranmore Co. Galway Ireland +353 91 792444 Fax +353 91 792445