

BB-ENSxxx series

Harsh-duty Ethernet Connectors & Cabling



BB-ENSAM315

Features

- Environmental Sealing
- Vibration Resistance
- Secure Robust Connections
- Performance in Electrically Noisy Conditions

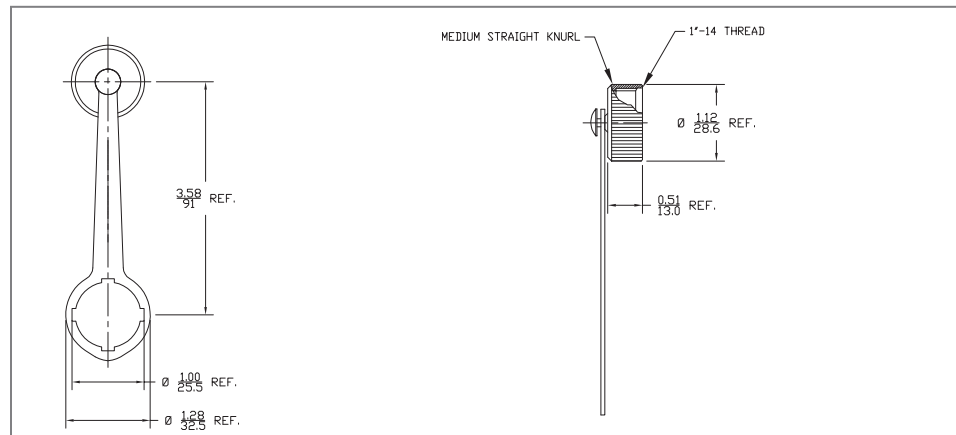
By combining standard RJ-45 connection technology with the industrially-proven mini form factor, these Industrial Ethernet Connectivity products provide a line-up designed to safeguard the integrity of your data even in the harshest manufacturing, processing or commercial settings.

Closure Cap

Maintains sealing integrity for RJ45 receptacle when a connector is not mated with the receptacle. RoHS, REACH.



BB-67-0300 IP67 rated enclosure cap with lanyard

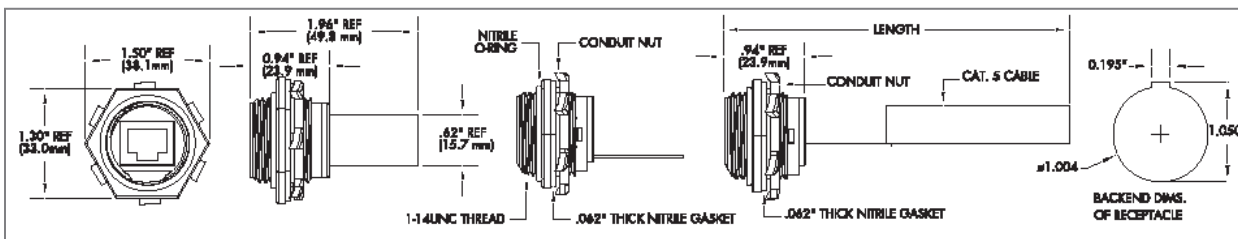


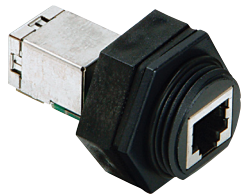
Standard PCB Board Receptacle

Highly flexible, enables an OEM or end-user to solder a cable lead to an internal Ethernet connection.



BB-ENSR1FB5..... Receptacle with PC board

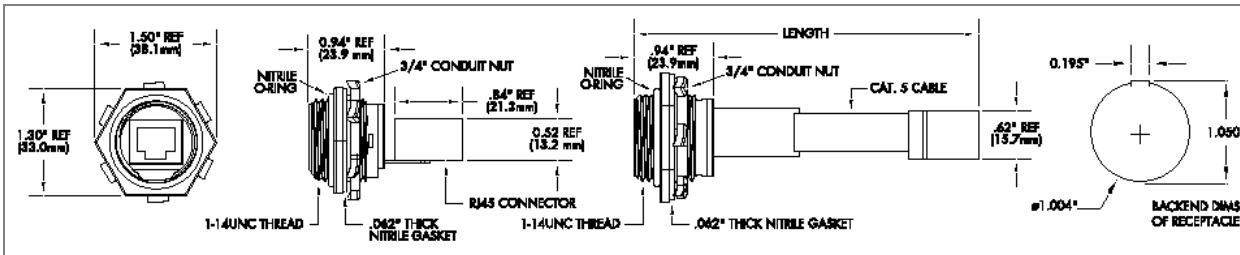




Bulkhead Pass-through

To bring Ethernet into a cabinet or control box, simply create the sealed connection on the outside of the enclosure, and run a commercial patch cord from the backside RJ-45 jack to your PLC, I/O, or Ethernet Control Board. No conduit entry is required.

BB-ENS1F5RJ-45 Bulkhead pass-through with backside jack



Receptacle Specifications

General	
O-Ring Material	Nitrile Rubber
Receptacle Shell Material	Acrylonitrile-Butadiene-Styrene (ABS), standard version
Knockout Hole for Receptacle	1.031
Mating Thread	UNC 1 in - 14
Operating Temperature	-20 to +80 °C
Return Loss	5 dB @ 100 MHz
Shock/Vibration	Per IEC 60068-2-6
Environmental Rating	IEC IP67
Method	Optical
Rating	2,000 V

TIA / EIA Rating	
110 Punchdown	Category 5e compliant
Bulkhead Pass-through	Category 5e compliant
Direct PCB Mount	Category 5 compliant
Standard PC Board	Not rated - additional customer termination is required
Rating	2,000 V
RS45 Jack	
Base Material	Copper alloy with 30µ - inches, gold alloy
Underplating	2.54 microns, nickel
Mating Cycles	250, minimum
Current Rating	1.5 A
Voltage Rating	125 Vdc

Cordset

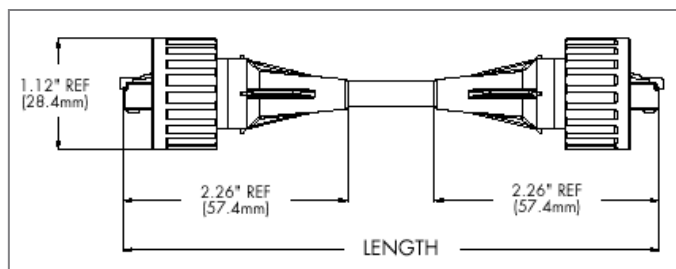
This cordset utilizes a standard RJ-45 plug, but adds strain relief and a locking mechanism that creates a seal when mated with a receptacle. It can be ordered to length as an overmolded cordset, or as an attachable device that can be assembled in the field.

Overmolded Cordsets is available in two configurations:

- _when both cord ends are in a harsh environment, order with two industrial sealed connectors.
- _for a cable with one end in a harsh environment, and the other in a sealed or office area, order with one industrial connector and one commercial grade plug for a better fit into a standard patch panel.



BB-ENS2115M040... Male Industrial to Male Industrial RJ45, 4 meter, 568A, 8 conductor



Connector Specifications

General	
Insert Material	Acrylonitrile-Butadiene-Styrene (ABS)
Overmold Material	Polyurethane (Solid Core & Proplex)
Coupling Nut Material	Acrylonitrile-Butadiene-Styrene (ABS)—standard version. Acrylonitrile-Styrene-Acrylate (Luran™ S778 T/TE)—UV stabilized version.
Recommended Mating Torque	12-inch-lbs.

Field Attachable Connector

Assemble the connection in the field using a standard crimping tool, and still enjoy the same IP67 sealed connection as the overmolded cordset. One thousand foot bulk cable put-ups are available for both Solid Core PUR and Proplex cable.



BB-ENSAM315.....Field attachable RJ-45 connector, solid core C5 cable
BB-ENQAM315.....Field attachable RJ-45 connector, stranded core C5 cable

