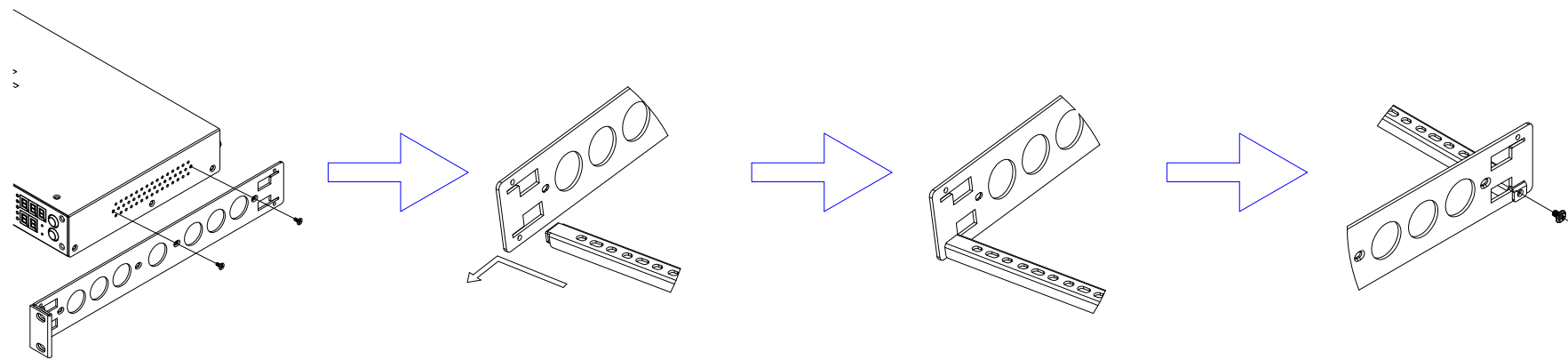
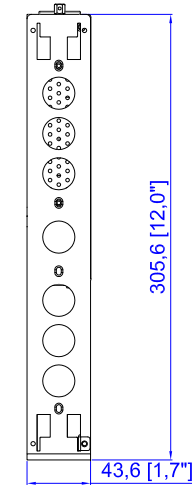


IEC60309 16A

VIEW A



VIEW B

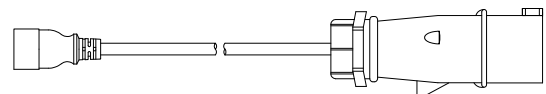


Rear

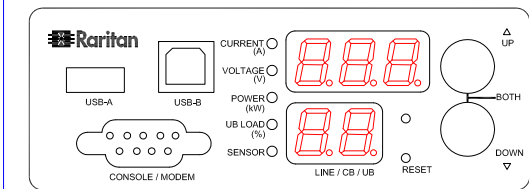


IEC60320 C19

IEC309 16A / 250V P+N+PE

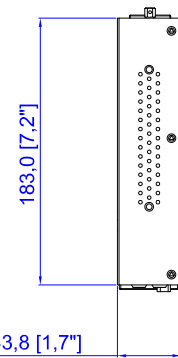
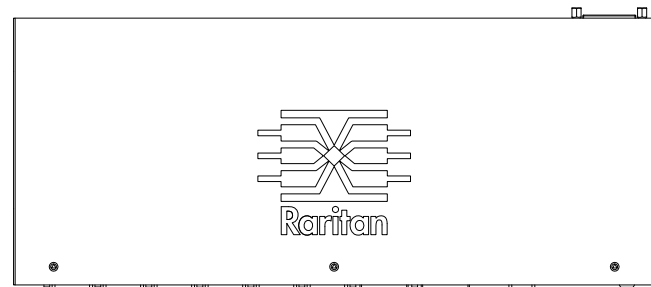


See VIEW A

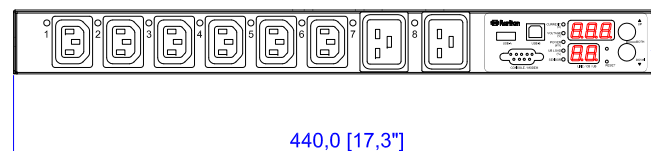


VIEW C

TOP

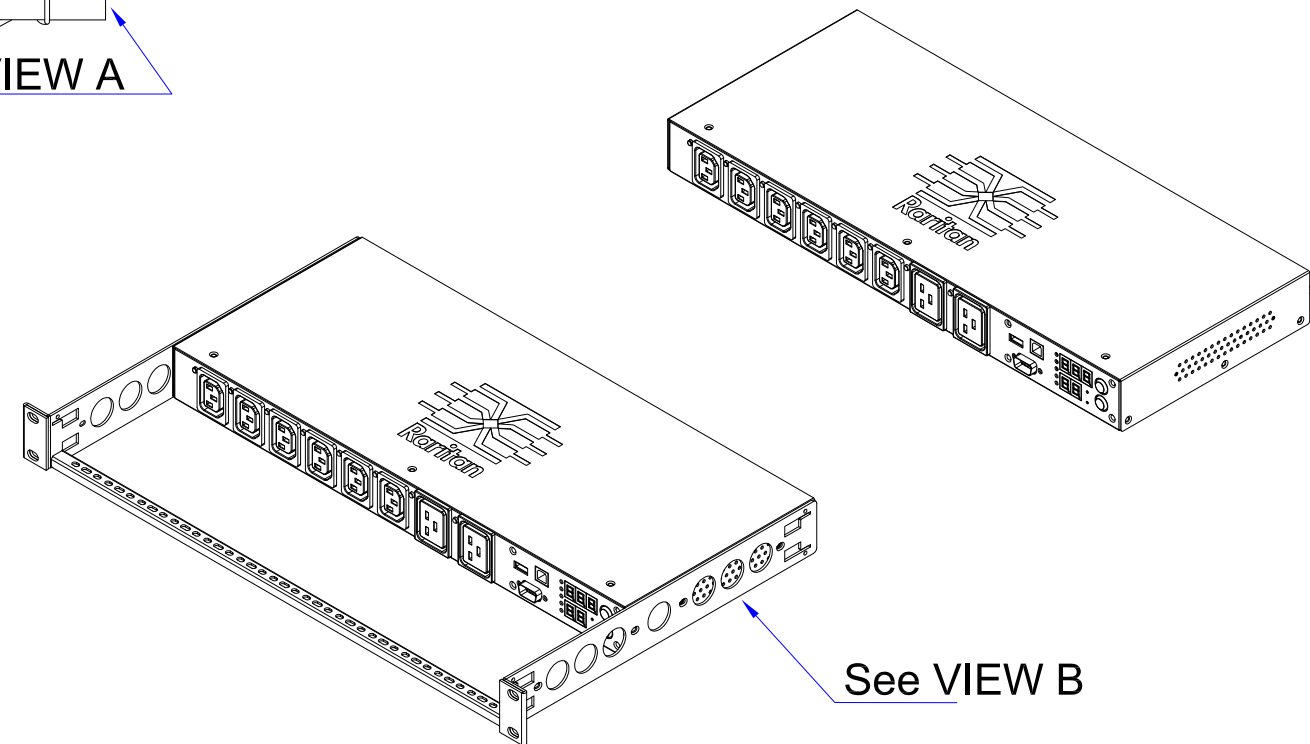


Front



440,0 [17,3]

See VIEW C



See VIEW B

NOTES:
1. ALL DIMENSIONS ARE MILLIMETERS [INCHES].



PROJECTION
THIRD ANGLE

DO NOT SCALE DRAWING
SHEET 1 OF 1

THIS DRAWING AND SPECIFICATIONS HEREIN ARE THE PROPERTY OF RARITAN, INC. AND SHALL NOT BE COPIED, REPRODUCED OR USED, IN WHOLE OR IN PART, AS THE BASIS FOR THE MANUFACTURE OR SALE OF ITEMS WITHOUT WRITTEN PERMISSION FROM RARITAN, INC. THIS DRAWING IS BASED UPON LATEST AVAILABLE INFORMATION AND IS SUBJECT TO CHANGE WITHOUT NOTICE.

TITLE: iPDU One U
Single Phase, 16A/200V-240V
Inlet Type: IEC320 C20
Plug Type: IEC60309 16A
Outlet Type: (6) IEC320 C13, (2) IEC320 C19

DWG NO. **MPX2-5193R & MPX2-4193R** REV. **0B**

Drawing Maker: Eva_Lin Oct. 08, 2015
Design Engineer: Siang_H Oct. 08, 2015
Approver: Tom_H Oct. 08, 2015