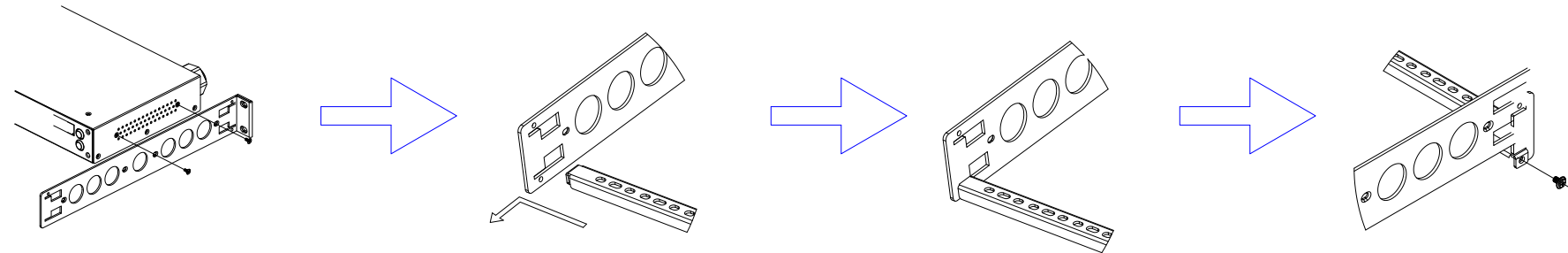
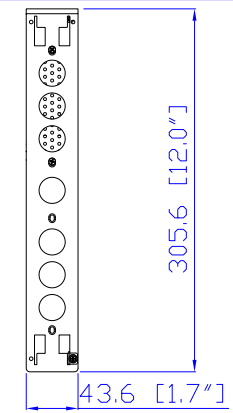


IEC60309 32A

VIEW A



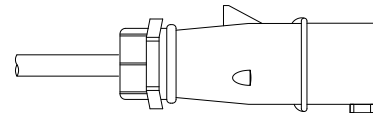
VIEW B



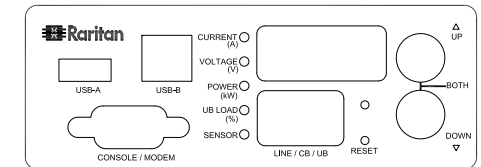
Rear



IEC60309 32A

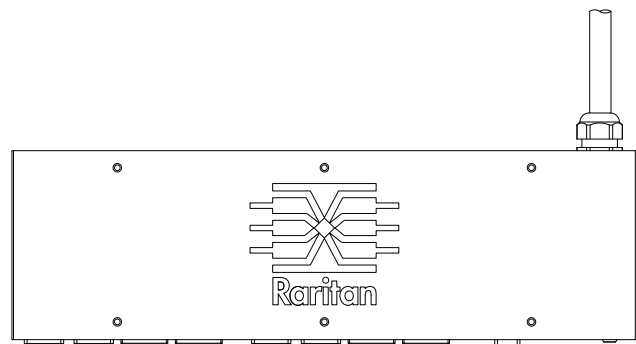


See VIEW A

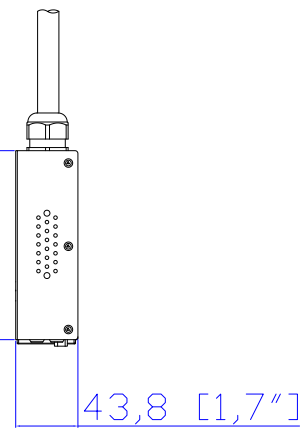


VIEW C

TOP

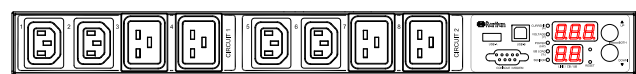


133,0 [5,2"]



43,8 [1,7"]

Front



440,0 [17,3"]

See VIEW C

See VIEW B

NOTES:

1.ALL DIMENSIONS ARE MILLIMETERS[INCHES].



PROJECTION  
THIRD ANGLE

DO NOT SCALE DRAWING

SHEET 1 OF 1

DRAWN :	EVA LIN	Mar. 25,2013
ENGINEER:	Siang_H	Mar. 25,2013
APPROVED:	Tom_H	Mar. 25,2013

THIS DRAWING AND SPECIFICATIONS HEREIN ARE THE PROPERTY OF RARITAN, INC. AND SHALL NOT BE COPIED, REPRODUCED OR USED, IN WHOLE OR IN PART, AS THE BASIS FOR THE MANUFACTURE OR SALE OF ITEMS WITHOUT WRITTEN PERMISSION FROM RARITAN, INC. THIS DRAWING IS BASED UPON LATEST AVAILABLE INFORMATION AND IS SUBJECT TO CHANGE WITHOUT NOTICE.

TITLE:  
iPDU Zero U,  
Single phase 32A / 200V-240V  
Plug Type: IEC60309 32A  
Output Type: (4)IEC320 C13,(4)IEC320 C19

DWG NO.

MPX2-1170R

REV.

A