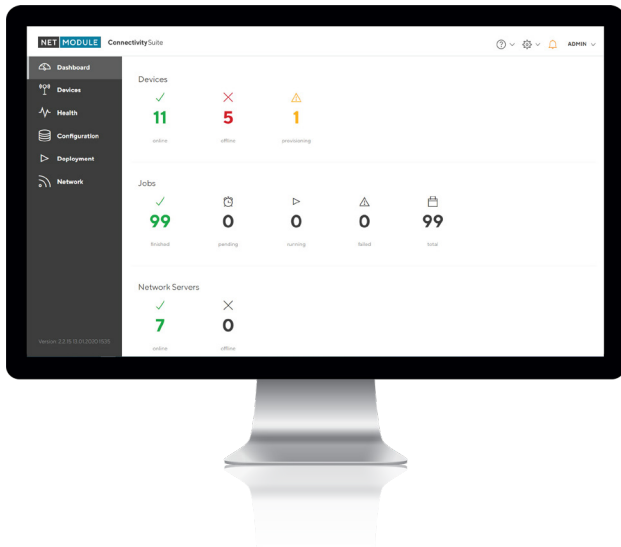


Connectivity Suite

30.08.2019, ©NetModule AG
 Product Information Connectivity Suite
 Errors reserved

Build, monitor and manage your network infrastructure



Key Features

Central device and network management

Auto-setup of encrypted VPN infrastructure for secure communication

Automated and scheduled remote OTA updates and configurations

Connection state supervision

On-premise or cloud-based installation

Product Description

The Connectivity Suite, a web-based and modular management platform for NetModule devices helps to manage complex and fast-growing networks and components to save time and money.

Build your Network

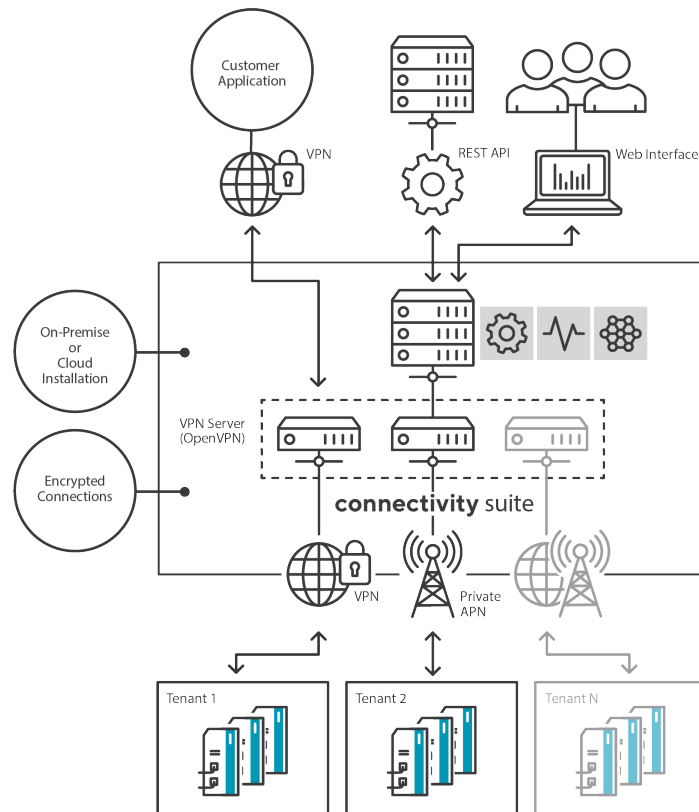
The configuration management gives instant access to latest configuration of any device and enables OTA- configuration/updates. Software and configuration updates can be scheduled so that they're executed automatically at the desired time. Bulk configuration of a complete machine fleet is possible. In support or maintenance cases a fast-remote access is possible.

Monitor your Devices

The monitoring platform component continuously supervises the connection status of devices and networks. The overall status is part of the platform dashboard and allows reliable monitoring of the installed devices. Condition monitoring of connected field devices is possible. Faulty interfaces can be identified efficiently and provide therefore a fast troubleshooting.

Manage your Network Sites

The connectivity suite enables the user to create logical grouping (tenant) and separation of several network within one management platform. NetModule routers can be easily integrated into an existing group. Connectivity Suite automates the management of secure communication between server, tenants and the devices (incl. end devices) using proven encryption techniques such as OpenVPN.



Features

Build

- Automatic setup of secured VPN networks (Open VPN)
- Remote provisioning of NetModule routers
- Automatically setup of router and VPN server configuration
- Remote device assignment to a network
- Replicate various networks with identical IP addresses using 1:1 NAT
- Add generic devices to a network
- Integration of Devices via private APN

Manage

- Remotely create, delete or modify networks
- Remotely add, disconnect or modify devices
- OTA bulk configurations and firmware updates of NetModule routers
- Central management of device configuration and firmware
- Upload and store complete configurations or configuration snippets
- Remotely change configurations or configuration snippets
- Historicize all configuration changes
- Schedule device configuration and firmware updates

Monitor

- Monitor the connection status of the devices and networks
- Monitor the uptime of the connected devices
- Comprehensive and central overview of the networks and their devices
- Overview of the scheduled configuration & firmware updates

Interfaces

- HMI communication interface based on a https web interface
- M2M communication interface based on a REST API
- VPN (OpenVPN) interface to directly access the connected devices

Platform

- User management (roles, groups, tenants)
- Install the CS instance on an in-house or cloud server
- Max. 150 Tenants per instance and max. 512 devices per Tenant

Order information

CS with VPN, annual license for ≤ 20 devices

Order number: CS_20_Lic

CS with VPN, annual license for ≤ 50 devices

Order number: CS_50_Lic

CS with VPN, annual license for ≤ 100 devices

Order number: CS_100_Lic

CS with VPN, annual license for ≤ 200 devices

Order number: CS_200_Lic

CS with VPN, annual license for ≤ 300 devices

Order number: CS_300_Lic

CS with VPN, annual license for ≤ 400 devices

Order number: CS_400_Lic

CS with VPN, annual license for ≤ 500 devices

Order number: CS_500_Lic

CS with VPN, annual license for ≤ 600 devices

Order number: CS_600_Lic

CS with VPN, annual license for ≤ 700 devices

Order number: CS_700_Lic

CS with VPN, annual license for ≤ 800 devices

Order number: CS_800_Lic

CS with VPN, annual license for ≤ 900 devices

Order number: CS_900_Lic

CS with VPN, annual license for ≤ 1000 devices

Order number: CS_1000_Lic