



5G High-Performance Multi-Network Router for Public Safety, Field Service Fleets and Mission-Critical Fixed Applications

XR80 Product Description

The supercharged AirLink XR80 is optimized for fixed and mobile applications. The available dual-5G cellular radio and 5X4 MU MIMO Wi-Fi 6 delivers flexibility for customized configurations. The AirLink XR80 supports complete device-to-cloud security, reduces your total cost of ownership with ALMS Out-of-Band management, and with the cartridge-based design, enables long-term expandability and upgradability.

AIRLINK XR80 5G

Rugged 5G router capable of 4.14 Gbps download and 660 Mbps upload. Wi-Fi optional.

AIRLINK XR80 LTE CAT 20

Rugged LTE Cat 20 router capable of 2.0 Gbps download and 210 Mbps upload. Wi-Fi optional.

KEY FEATURES

- Single 5G or Single 4G Expandable to Dual 5G or Dual 4G/5G
- 5x4 MU MIMO Wi-Fi 6
- Single 5G: 3 Gigabit Ethernet
Dual 5G: 4 Gigabit Ethernet
- Single/Dual Serial
- GNSS with Dead Reckoning
- IP64 Rated
- AirLink OS with AirLink Complete

Ideal Applications

Mobile mission-critical applications in public safety and field service fleets, Fixed Wireless Access, SCADA, Edge and industrial IoT.

- Ambulance/EMS
- Law Enforcement
- Utility Bucket Trucks
- Commercial Fleets
- Manufacturing
- Fixed Utility Applications
- Pipeline monitoring
- Remote Learning
- Retail, Digital Signage and Security

Benefits

- Designed for fixed and mobile mission and business-critical applications that require ultimate connectivity and reliability
- Real-time connectivity with unmatched uplink and downlink speeds using 5G, LTE Cat 20, Wi-Fi 6, and 5 Gbps Ethernet technology
- “Always-on” connectivity delivers consistent primary and backup connectivity for public and private networks using AirLink Cognitive Wireless
- Simplified set up and useability with new AirLink OS and upgraded AirLink Management Service (ALMS)
- AirLink Complete with ALMS Out-of-Band Management provides zero-touch set up and reduced service calls
- Ready for your Edge computing workloads (Beta)

XR80 Services and Support



AIRLINK COMPLETE

Maximize your AirLink XR80 hardware investment with AirLink Complete – a comprehensive service package designed to empower you with the tools and support necessary to secure, optimize and effortlessly scale your XR80 deployments.

AirLink Complete includes*:

- AirLink Management Service (ALMS) for remote device and security management
- Extended hardware warranty up to 5 years maximum
- Expert technical support
- For more information on AirLink Complete visit our [web page](#)

**With active subscription. 1-year subscription included with the XR80 purchase*



AIRLINK PREMIUM

Ideal for organizations managing mission-critical vehicle fleets, this service upgrade encompasses all the benefits of [AirLink Complete](#)*, enhanced with:

- **Advanced Mobility Reporting***: Offers comprehensive coverage and fleet reporting to monitor your network and vehicles.
- **Advance Replacement***: Provides same-day shipping for in-warranty router replacements, minimizing downtime, spare inventory and keeping your operations running smoothly.

**With active subscription.*



HYBRID CLOUD

This optional feature merges the benefits of cloud technology with on-premise security controls for the management of your AirLink XR and RX routers, offering ultimate security and control.

[Hybrid Cloud](#) is available to add to an active AirLink Complete or Premium subscription.



AIRLINK CONNECTION MANAGER (ACM) – MOBILE VPN

This purpose-built VPN solution securely extends your enterprise network to your AirLink router and its connected devices and applications.

Optimized for use in a mobile, multi-network environment, it seamlessly maintains VPN tunnels as users roam between multiple carrier and Wi-Fi networks to prevent downtime and loss of communications.

Available in a FIPS 140-2 compliant offering.



ANTENNAS

- Tested and certified to provide guaranteed performance with all AirLink routers
- Accelerate deployment with always-on, end-to-end connectivity
- For more information on antennas specific to the XR80 router visit our [web page](#)

AirLink XR80 – Router Specifications

| KEY FEATURES | |
|-------------------|---|
| Cellular Radios | 5G/LTE Cat-20 LPWA for ALMS Out of Band Management |
| Wi-Fi | 5x4 MIMO Wi-Fi 6 |
| Ethernet | 2x Gigabit + 1x 5 Gigabit Ethernet Port (RJ45) |
| Serial | Single/Dual RS-232 (DB9) with optional cables |
| GNSS | 48 Channel GNSS with Dead Reckoning |
| CAN | CAN bus/OBD-II (J1979)/J1939 |
| I/O | 5 GPIO |
| USB | USB 3.1 USB-C |
| IP Rating | Sealed Aluminum Housing (IP64 Rated) |
| Services | AirLink Complete |
| Operating System | AirLink OS |
| Management System | ALMS |

| | LTE NAM | LTE GLOBAL | 5G NAM | 5G GLOBAL |
|-----------------------------|---------------------|---------------------|---------------------|---------------------|
| CELLULAR | | | | |
| Variant | NAM | EMEA & APAC | NAM | EMEA & APAC |
| Technology | LTE | LTE | 5G | 5G |
| Peak Downlink (Theoretical) | 2 Gbps | 2 Gbps | 4.14 Gbps | 4.14 Gbps |
| Peak Uplink (Theoretical) | 210 Mbps | 210 Mbps | 660 Mbps | 660 Mbps |
| LTE Category | Cat-20 | Cat-20 | 5G | 5G |
| Region | NAM | EMEA, APAC | NAM | EMEA, APAC |
| Radio | EM7690 | EM7690 | EM9190 | EM9190 |
| MIMO | 4x4 | 4x4 | 4x4 | 4x4 |
| RF Connectors | FAKRA | FAKRA | FAKRA | FAKRA |
| SIM | Dual SIM (Mini-2FF) | Dual SIM (Mini-2FF) | Dual SIM (Mini-2FF) | Dual SIM (Mini-2FF) |

| FREQUENCY BANDS | | | | |
|-----------------|----------------|--------|------------|------|
| | 5G (SA & NSA)* | 4G LTE | 3G (HSPA+) | LPWA |
| 1 | n1 | B1 | B1 | B1 |
| 2 | n2 | B2 | B2 | B2 |
| 3 | n3 | B3 | | B3 |
| 4 | | B4 | B4 | B4 |
| 5 | n5 | B5 | B5 | B5 |
| 6 | | | B6 | |
| 7 | n7** | B7 | | |
| 8 | n8** | B8 | B8 | B8 |
| 9 | | | B9 | B9 |
| 10 | | | | B10 |
| 12 | n12** | B12 | | B12 |
| 13 | | B13 | | B13 |
| 14 | | B14 | | |
| 17 | | B17 | | B17 |
| 18 | | B18 | | B18 |
| 19 | | B19 | B19 | B19 |
| 20 | n20** | B20 | | B20 |
| 25 | n25** | B25 | | B25 |
| 26 | | B26 | | B26 |
| 27 | | | | B27 |
| 28 | n28 | B28 | | B28 |
| 29 | | B29 | | |
| 30 | | B30 | | |
| 32 | | B32 | | |

| FREQUENCY BANDS | | | | |
|-----------------|----------------|--------|------------|------|
| | 5G (SA & NSA)* | 4G LTE | 3G (HSPA+) | LPWA |
| 34 | | B34 | | |
| 38 | n38** | B38 | | |
| 39 | | B39 | | |
| 40 | n40** | B40 | | |
| 41 | n41 | B41 | | |
| 42 | | B42 | | |
| 43 | | B43** | | |
| 46 | | B46*** | | |
| 48 | n48** | B48 | | |
| 66 | n66 | B66 | | B66 |
| 71 | n71 | B71 | | |
| 77 | n77 | | | |
| 78 | n78 | | | |
| 79 | n79 | | | |

* XR80 5G SKUs only

** Full-band models only (SKUs ending in FB)

*** Downlink only

| | LTE NAM | LTE GLOBAL | 5G NAM | 5G GLOBAL |
|-------------------------------|--|---|---|---|
| WIRELESS CERTIFICATION | | | | |
| Regulatory | FCC, IC/ISED, PTCRB | GCF, CE, RED, RCM, ESN | FCC, IC/ISED, PTCRB | GCF, CE, RED, RCM, ESN |
| Carrier | AT&T, FirstNet® 4G, T-Mobile, Verizon, Rogers, Telus, Bell, CBRS, C-Band | | AT&T, FirstNet 4G, T-Mobile, Verizon, Rogers, Telus, Bell, CBRS, C-Band | Telstra |
| Public Safety | FirstNet® 4G | ESN | FirstNet® 4G | ESN |
| Part Numbers | 1104881 Base 1104879 Wi-Fi 1104757 XP 5G Cartridge (Optional) | 1104880 Base 1104878 Wi-Fi 1104757 XP 5G Cartridge (Optional) | 1104793 Base 1104789 Wi-Fi 1104757 XP 5G Cartridge (Optional) | 1104791 Base 1104787 Wi-Fi 1104757 XP 5G Cartridge (Optional) |

| WI-FI (Optional) | |
|-------------------------------|--------------------|
| Wi-Fi Standard | Wi-Fi 6 802.11ax |
| Access Point | Dual (2.4 & 5GHz) |
| Client (Depot/WAN) | Yes |
| Client & AP | Yes |
| Peak Throughput (Theoretical) | 2400 Mbps |
| MIMO | 5x4 |
| Security | WPA2/3 Enterprise |
| Clients | 128 per radio |
| SSID | 6 |
| Output Power | 23.3 dBm per chain |
| Frequency | 2.4/5 GHz |
| RF Connectors | FAKRA (Beige) |

| ENVIRONMENTAL | |
|------------------------|--|
| Operating Temperature | -30°C to +70°C / -22°F to +158°F |
| Storage Temperature | -40°C to +85°C / -40°F to +185°F |
| Humidity | 95% RH @ 60C |
| Military Specification | MIL-STD-810G (Shock, Vibration, Thermal Shock, Humidity) |
| IP Rating | IP64 |

| INDUSTRY CERTIFICATIONS | |
|--------------------------------|--|
| Safety | IECEE Certification Bodies Scheme (CB Scheme), UL 60950 |
| Vehicle Usage | E-Mark (72/245/EEC, 2009/19/EC), ISO7637- 2, SAE J1455 (Shock & Vibration, Electrical) |
| Environmental Directives | RoHS2, REACH, WEEE, Prop 65 |
| Hazardous Environments | Class 1 Div 2 – Ambient temperatures of -30°C to +60°C |
| Rail Usage | EN50155/EN45545 (Rolling Stock) |

| POWER | |
|-------------------|---|
| Input Voltage | 7 to 36 VDC |
| Power Consumption | Peak: 54W (4.5A @12V) Standby: 55mW (4.5mA@12V) |
| Power Modes | Built-in protection against voltage transients including 5VDC engine cranking and +200 VDC load dump. Ignition Sense with time delay shutdown |

| SECURITY | |
|-----------------|---|
| AAA | 802.1x /Radius authentication with Wi-Fi |
| Firewall | Stateful firewall with port forwarding, DMZ |
| WLAN Encryption | WPA2/WPA3 Personal/Enterprise |
| Firmware Update | Secure Firmware Update |

| NETWORK AND ROUTING | |
|------------------------------|---|
| Throughput | 1150 Mbps Firewall TCP throughput |
| Features | Semtech Cognitive Wireless IPv4 and IPv6 Routing Network Address Translation (NAT) Port Forwarding DHCP Server IP Passthrough LAN Segmentation IPv4 Passthrough and IPv6 Prefix Extension WAN/LAN Connection Policy Management Policy-Based Routing Configurable MTU size Static Routing WAN Ethernet |
| QoS | Application/Traffic Priority Queuing |
| WAN Monitors | Connection Failure Recovery |
| LAN (ETHERNET/USB) | |
| | USB to Ethernet |
| VPN | |
| Throughput | 350 Mbps IPsec VPN TCP throughput |
| Features | Integrated with ACM VPN Server IPsec protocol with IKEv1/IKEv2 FIPS 140-2 Level 1 compliant |
| Encryption | AES128/AES192/AES256 |
| Hashing | SHA256/SHA384/SHA512 |
| Key Exchange | DHGroup14/15/16/17/18/19/20/21 |
| | LAN to LAN and Host to LAN Up to 10 concurrent tunnels per link MOBIKE protocol IP compression Full/Split Tunnel Dead Peer Detection (DPD) |
| ROUTER MANAGEMENT INTERFACES | |
| | ALMS Local web user interface REST API (Beta) |
| EDGE COMPUTING | |
| | Support for Edge Compute Containerized Applications (Beta) |
| RAM ^{1,2} | 200 MB |
| Storage (Flash) ¹ | 750 MB |
| CPU | Quad Core ARMv8 64 bit |

1. Approximation available to containers (not device total)
2. Depends on other enabled features

| AIRLINK COMPLETE (1 Year Included With Router Purchase) | |
|---|---|
| Support | 24/7 technical support* |
| Hardware Warranty | 1-year standard hardware warranty Extended hardware warranty up to 5 years with current subscription** |
| Device Management | AirLink Management Service (ALMS)* |
| Software Updates | Unrestricted critical firmware updates |
| AIRLINK PREMIUM (Optional Upgrade) | |
| Includes All Airlink Complete Features* and Adds: | |
| Advanced Mobility Reporting | Coverage and fleet reporting*** |
| Advance Replacement | Same-day shipping for in-warranty router replacements*** |
| RELIABILITY | |
| MTBF | Base: 23.8 years Wi-Fi: 21.3 years Using Telcordia SR-332 Issue 3 Method 1 |
| ACCESSORIES | |
| In The Box | XR80, DC Power Cable, LPWA Antenna, Quick Start Guide, AirLink Complete Leaflet |
| Other Accessories (sold separately) | 6001004 XR80/90/MP/LX I/O Cable 6001192 XR80/90/MP70 J1939 Y Cable 6001204 XR80/90/MP70 OBD-II Y Cable 6001350 XR80/90 Mounting Bracket 6001372 XR80/90 AC Adaptor, 24 VDC 6001406 XR80/90 DC Power Cable 6001409 XR80/90 RJ45 to Dual DB9 6001410 XR80/90 RJ45 to Single DB9 6001433 XR80/90 DIN Rail Mounting Bracket 6001440 XR80/90 FAKRA Replacement Kit (8 Pieces) 6001456 XR80/90 to MG90 Mounting Bracket 1104757 XR80/90 XP-5G XR-Cartridge Global & NAM For Antenna options visit: web page |
| DIMENSIONS | |
| AirLink XR80 – Main Body | 220mm x 170mm x 53mm / 8.7 x 6.7 x 2.1 in Weight: Non Wi-Fi 1.80 kg / 3.97 lb, Wi-Fi 2.00 kg / 4.41 lb |
| AirLink XR80 – Main Body with Single 5G Expansion Cartridge | 220mm x 220mm x 53mm / 8.7 x 8.7 x 2.1 in Weight: 2.64 kg / 5.82 lb |

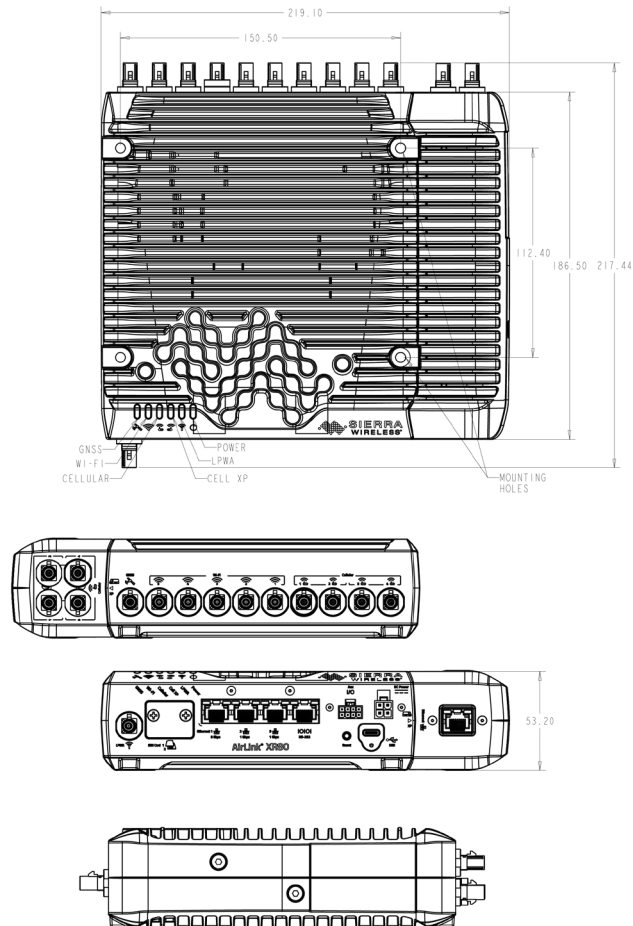
*With current AirLink Complete subscription

**Full warranty terms are available at www.sierrawireless.com/end-user-warranty

***With current AirLink Premium subscription

AirLink XR80 – Router Dimensions Diagram

AirLink XR80 with optional 5G expansion cartridge



About Semtech

Semtech Corporation (Nasdaq: SMTC) is a high-performance semiconductor, IoT systems and cloud connectivity service provider dedicated to delivering high-quality technology solutions that enable a smarter, more connected and sustainable planet. Our global teams are committed to empowering solution architects and application developers to develop breakthrough products for the infrastructure, industrial and consumer markets.

To learn more about Semtech technology, visit us at [Semtech.com](https://www.semtech.com) or follow us on [LinkedIn](#) or [X](#).