



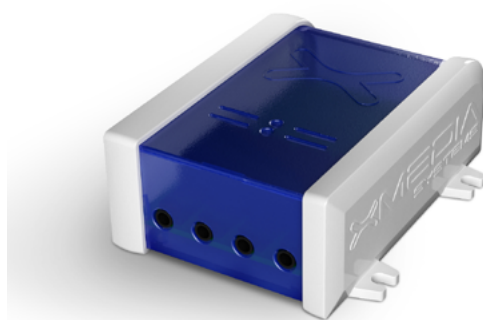
EM-4 EXPANSION MODULE

XM range

The Nexmosphere XM range offers Xperience Controllers in a configurable and extendable form factor making it ideal to use when functionality combinations that aren't available in the smaller ranges are required. This series consists of XM controllers and EM extension units, which are mounted together at our production facilities in order to offer you just the right functionality set for your project.

EM series

The EM modules define the exact specification of the complete XM Xperience controller. Combine any of the modules into one system to make it fit the exact application needs. Different functionalities such as LED control, audio switching or large numbers of Element connections through X-talk channels can all be combined on a single XM controller. The EM modules are pre-assembled onto the XM controllers at our production facilities.



Features

- 4x Audio switching channel

Audio switching

Audio switching redirects the incoming audio stream from an external media player to one of the connected outputs. The switching circuit guarantees a fast transition from one output channel to another. Multiple outputs can be selected simultaneously to demonstrate multi-speaker solutions.

- 4 Individually controlled switchable stereo audio outputs
- Multiple outputs can be selected simultaneously
- Channels can be used as output as well as input
- Supports line-out as well as headphones (AutoDetect)
- Also compatible with XM-range controllers with internal MP3 player (only available in Stand-Alone mode)

EM expansion

The EM modules define the exact specification of the complete XM Xperience controller. Combine any of the modules into one system to make it fit the exact application needs. Different functionalities such as LED control, audio switching or large numbers of Element connections through X-talk channels can all be combined on a single XM controller. The EM modules are pre-assembled onto the XM controllers at our production facilities.

- Compatible with any of the EM- modules
- Connect up to 5 EM-modules to one XM-controller
- Pre-assembled factory build for your application

Benefits

- Auto start-up and configuration for highly reliable standalone applications (24/7 operability)
- Combine any of the EM and XM modules to make an exact fit for your application



EM-4 EXPANSION MODULE

Thermal specifications

Operating temperature: +10°C...+40°C/ +50°F ... +104°F
Storage temperature: -20°C...+50°C/ -4°F ... +122°F
Cooling: Passive cooling (no moving parts)

Electrical specifications

Operating voltage: 5VDC
powered internally via XM/EM
Power consumption: 0.2A

Standards and Certifications



Miscellaneous

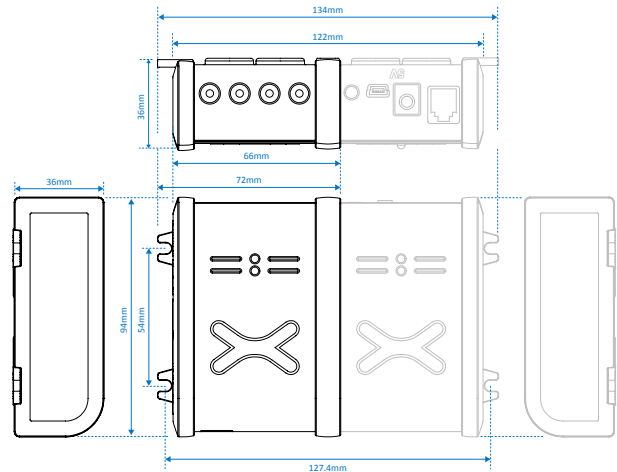
- Robust housing with screw brackets for secure fixing
- Built-in magnets for easy mounting on metal surfaces
- Both horizontal and vertical mounting allowed
- 1-year warranty (optional 3-year extended warranty available)

Packaging

Netto weight: 90g
Items per carton 1 or 10 pcs
(pre-assembled on XM controller)

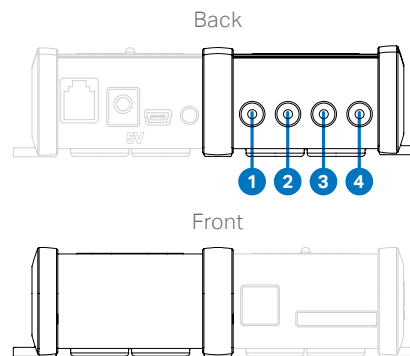
Mechanical dimensions

LxWxH: 94 x 72 x 36 mm / 94 x 134 x 36 mm
Screw fixation: 54 x 127,4 mm



Hardware interfaces

1. Audio channel 1, 3.5mm stereo Jack socket
2. Audio channel 2, 3.5mm stereo Jack socket
3. Audio channel 3, 3.5mm stereo Jack socket
4. Audio channel 4, 3.5mm stereo Jack socket



Ordering information

Product ID	Description	Quantity
EM-4	Expansion module, 4 channel audio switch	1 pc

Nexmosphere

High Tech Campus 10 (Mμ building)
5656 AE Eindhoven • The Netherlands

T +31 40 240 7070
E sales@nexmosphere.com

© 2017-2020 Nexmosphere. All rights reserved. v2.0 / 02-20
All content contained herein is subject to change without prior notice.