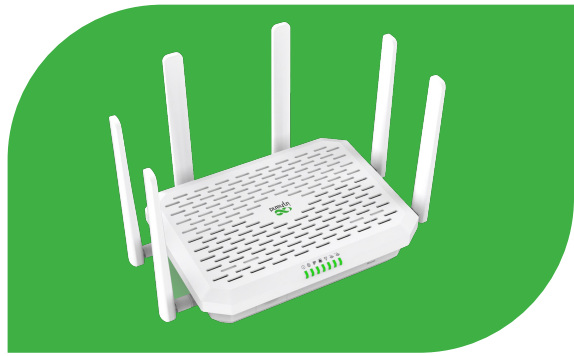


Instant 5G Connectivity Starts Here

5G FWA02 Router



• 5G

• Wi-Fi 6

• Cloud-Managed

The FWA02 offers global 5G connectivity, ensuring convenient, reliable, and secure internet access wherever you are – be it in urban, suburban, remote, or rural areas. Unlike conventional cable and fiber connections, the FWA02 delivers a faster, lower-latency, and higher-performance network experience, providing a distinct advantage. By simplifying internet access into a plug-and-play network, the FWA02 allows you to concentrate on your business and online activities. Its seamless 5G wireless connectivity adds dynamism and excitement to your network experience.



Rural School

Empowering rural children for their future



Retail Store

Reliable network delivers fantastic shopping experience



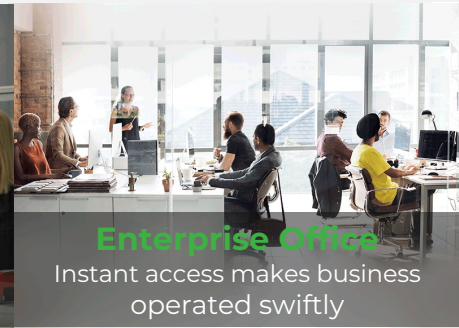
Medical Station

Connecting every moment, making rescues more efficient



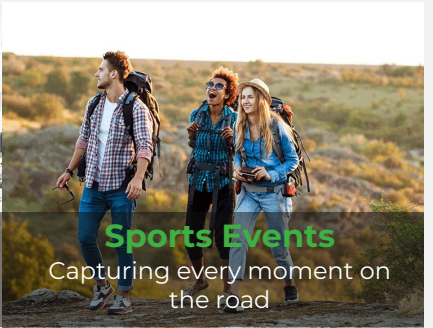
Government Agency

Secure network for critical information



Enterprise Office

Instant access makes business operated swiftly



Sports Events

Capturing every moment on the road



Research Station

Fulfilling the vision of scientific innovation



Public Safety

Efficient and rapid emergency network



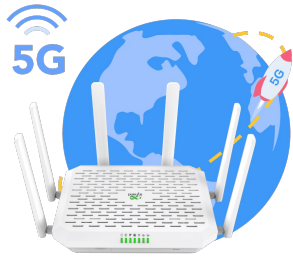
RV Travel

Enjoying every moment with the ones you love

Features and Advantages

● Plug and play high-speed 5G

The FWA02 brings you high-speed internet without waiting. With blazing-fast 5G, download speeds of up to 4.76Gbps, upload speeds of up to 1.25Gbps, and the ability to fall back to high-speed LTE Cat 19.



● “Always-on” connectivity

The FWA02 comes with 5G/wired backup, cellular link failover, dual SIM switching, optional eSIM, and other features, providing a reliable and robust connection to ensure your network stability and reliability.



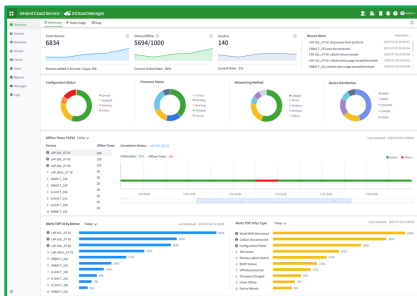
● Secure Network Connection

The FWA02 is equipped with firewall policies, access control, built-in VPN, data encryption, enhanced Wi-Fi security, and other features, effectively ensuring the security of the network.

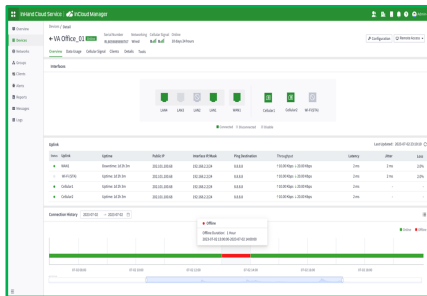


● Cloud-Managed Networking Solution

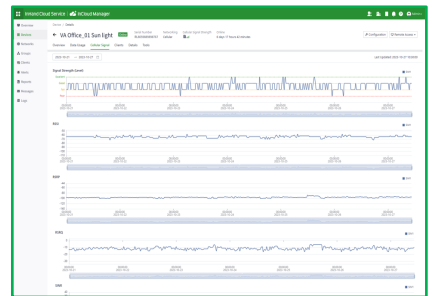
The FWA02 and the InCloud Manager deliver seamless cloud management of distributed sites at scale, monitor your network in real time and enhance IT management efficiency anywhere, unlocking the full potential of your network.



Take control

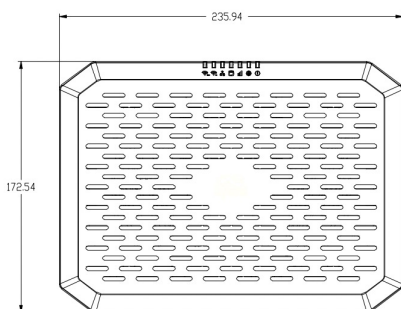
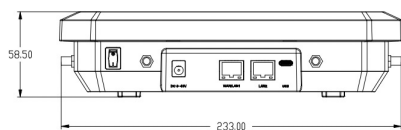


Real-time monitoring

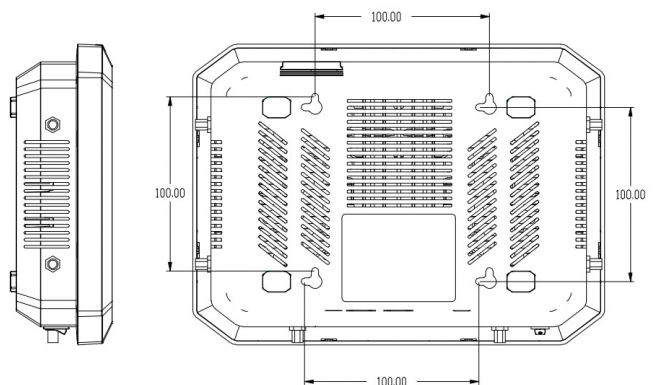


Critical Status

Dimensions (mm)



Dimensions: 236*172.5*58.5 (mm)



Product Specifications

5G FWA02 Hardware Specifications

Hardware Platform	
Stateful Firewall Throughput	2Gbps
Recommended No. of Users	220 (128 Wi-Fi devices)
Interfaces	
Cellular	5G SA&NSA: 4.76Gbps (DL)/1.25Gbps (UL) 4G CAT19 : 1.6Gbps (DL)/200Mbps (UL)
Ethernet Port	2*2.5 GbE RJ45 WAN/LAN switchable, Dual-LAN
USB	1*Type-C, USB 2.0, Supports HOST and SLAVE modes
SIM	1*eSIM 2*SIM, Nano SIM slot, Hot plug
Reset	Reset button
Power Switch	1*button
Lights	System, Cellular, Signal, WAN, LAN, Wi-Fi
Antenna Interface	6*external sub6 antenna, 4*built-in Wi-Fi antenna NATM model (4*external sub6 antenna)
Wi-Fi	
Radio Frequency	2.4GHz&5.8GHz
Max Transmission Bandwidth	3600Mbps
Transfer Protocol	802.11 ax/ac/b/g/n , Wi-Fi 6
Operating Model	AP mode
Power Supply	
Power	Circular interface, 12V 2A
Power Consumption	≤15W
Mechanical Features	
Installation	Wall mounted, desktop mounted
Dimensions & Weight	236*172.5*58.5 (mm), 2.2lbs
Environment	
Working Temp.	-10° C to 50° C
Storage Temp.	-40° C to 85° C
Humidity	5% to 95% (non-condensing)
Ingress Protection	IP20
Physical Properties	
Shockproof	IEC60068-2-27
Vibration Resistance	IEC60068-2-6
Free Fall	IEC60068-2-32
Certification	
Certification	FCC, IC, PTCRB, VZW, ATT*, TMO*, CE*
Warranty	3 years

5G FWA02 Software Specifications

Cloud Management	
InCloud Manager	Centralized management platform Simple and intuitive dashboard User-friendly management Batch upgrade and management
Uplink Management	
Network Access	Multiple network access, 5G/4G cellular network access, ETH network access
Dial-up Service	PPPoE, cellular automatic redial, dual SIM switching, APN configuration
Smart Link	Link backup/packet-by-packet load balancing among multiple links Real-time detection of link delay, jitter, and packet loss Supports priority adjustment
Monitoring & Alerts	
Dashboard	Device information, interface status, and refined traffic
Link Monitoring	Link delay, jitter, packet loss, and throughput monitoring
Cellular Signal	Real-time view of cellular signal strength, RSSI, RSRP, RSRQ, SINR
Data Security	System logs, diagnostic logs, device events, email alerts
Network Functions	
IP Protocol	IPv4/IPv6*
IP Application	VLAN, DHCP server/client, DNS, DDNS, fixed address assignment, IP passthrough
Interface Management	Duplex mode, link negotiation rate, interface enable
Wi-Fi 6	802.11 ax/ac/b/g/n , Wi-Fi 6, AP
Policy Management	Policy routing, traffic shaping
Self Recovery	Built-in software and hardware watchdog, self-healing equipment operation failure, to ensure the equipment maintains high availability
Security	
VPN	IPSec VPN, L2TP VPN
Firewall	Access control, port mapping, port forwarding, MAC address filtering, Firewall filtering based on MAC, IP, port, and protocol
Remote Maintenance	
Remote Access Control	Supports Web/Cli remote access
Cloud Connection	Remote maintenance of PCs, monitoring equipment, servers, etc.
Network Diagnostics	Ping, Traceroute, network packet capture tools, diagnostic logs
Configuration Backup	Supports configuration import and export

Note: The functions marked with * are not available yet.

Ordering Guide

Model	Model code: FWA02-<WMNN> <WMNN>: Type & Module
FWA02-NAVA	(For North America, Verizon, AT&T) 5G Sub 6: n2/5/7/12/14/25/30/41/48/66/71/77/78 LTE FDD: B2/4/5/7/12/13/14/17/25/26/29/30/66/71 LTE TDD: B41/46/48
FWA02-NATM	(For North America, T-Mobile) 5G Sub 6: n25/41/66/71 LTE FDD: B2/4/5/12/66/71 LTE TDD: 41 LAA: B46
FWA02-EUNR	(For Europe/Australia/Asia) 5G Sub 6: n1/3/5/7/8/20/28/38/40/41/71/77/78/79 LTE FDD: B1/3/5/7/8/20/28/32/71 LTE TDD: B38/40/41/42/43

InHand Cloud-Managed Networking Solution

Our solution encompasses cloud-managed edge routers, Wi-Fi access points, switches, 5G FWA/ODU cellular routers, and the InCloud Manager SaaS. By integrating top-tier IT management, IoT, 5G, and other technologies, we provide fast, secure, and user-friendly network solutions globally, enabling businesses to unlock boundless growth opportunities.



InCloud Manager

- Centralized management
- Efficient zero touch deployment
- Simplified network configuration
- Multi-dimensional security
- Multiple intelligent strategies



5G SD-WAN Edge Router

- 5G (Sub 6)/ LTE CAT20
- Multilink Backup & Dual SIM failover
- 5*Gigabit Ethernet port, dual WAN
- 802.11ac dual band, 1200Mbps
- SD-WAN, VLAN, VPN networking



5G Outdoor Unit

- High-speed 5G, DL 4.76Gbps, UL 1.25Gbps
- 2Gbps throughput
- 2.5G ETH, WAN/LAN, PoE
- IP67, -30~70° C, GPS
- Wall & pole mounting with adjustable angles

About Us

InHand Networks is a leading IoT solutions provider founded in 2001, dedicated to driving digital transformation across industries and empowering customers to unlock their full potential and achieve accelerated growth.

We specialize in delivering industrial-grade connectivity solutions for diverse sectors, such as enterprise networks, industrial and building IoT, digital energy, smart commerce, and mobility. Our comprehensive product portfolio and services cater to various applications worldwide, including smart manufacturing, smart grid, intelligent transportation, smart retail, etc. With a global footprint spanning over 60 countries, we serve customers in China, the United States, France, Germany, the United Kingdom, Italy, and beyond.



43671 Trade Center Place, Suite 100, Dulles,
VA 20166, USA
T: +1 (703) 348-2988
E: info@inhand.com
www.inhand.com